

# VOYAGE NAVIGATOR



FRIDAY  
JULY 28, 2017  
TO  
MONDAY  
AUGUST 7, 2017

## CRUISE HIGHLIGHTS

**FRIDAY**  
BARCELONA

Port Departure: 5:00 pm  
All Aboard: 4:00 pm  
Attire: Cruise Casual



**BE OUR GUEST - WELCOME ABOARD SHOW**  
Walt Disney Theatre  
6:30 pm & 8:45 pm

**SATURDAY**

VILLEFRANCHE-SUR-MER  
All Ashore: 8:30 am  
All Aboard: 6:45 pm  
Attire: Cruise Casual

The Magic & Mission of  
**Kyle Knight & Mistie**



**SHOWTIME: KYLE KNIGHT & MISTIE**  
Walt Disney Theatre  
6:30 pm & 8:45 pm

**SUNDAY**

LIVORNO (FLORENCE)  
All Ashore: 7:00 am  
All Aboard: 6:45 pm  
Attire: Cruise Casual



**WALT DISNEY: THE DREAM GOES ON**  
Walt Disney Theatre  
6:30 pm & 8:45 pm

**MONDAY**

OLBIA (SARDINIA)  
All Ashore: 8:00 am  
All Aboard: 5:45 pm  
Attire: Cruise Casual

**TUESDAY**

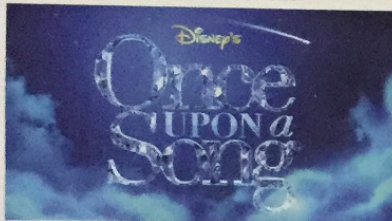
DAY AT SEA  
Attire: Formal

**WEDNESDAY**

CIVITAVECCHIA (ROME)  
All Ashore: 7:00 am  
All Aboard: 6:45 pm  
Attire: Cruise Casual

**THURSDAY**

NAPLES (POMPEII)  
All Ashore: 7:30 am  
All Aboard: 6:00 pm  
Attire: Cruise Casual



**ONCE UPON A SONG**  
Walt Disney Theatre  
6:30 pm & 8:45 pm



**TWICE CHARMED**  
Walt Disney Theatre  
6:30 pm & 8:45 pm



**SPIDER-MAN: HOMECOMING - (PG-13)**  
Walt Disney Theatre  
6:30 pm & 9:30 pm



**SHOWTIME: ABBAFAB**  
Walt Disney Theatre  
6:30 pm & 8:45 pm

**FRIDAY**

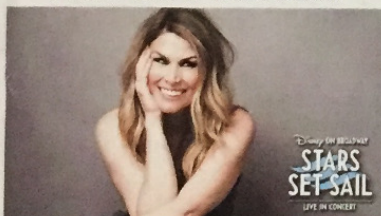
PALERMO (SICILY)  
All Ashore: 8:00 am  
All Aboard: 4:45 pm  
Attire: Pirate or Cruise Casual

**SATURDAY**

DAY AT SEA  
Attire: Semi Formal

**SUNDAY**

PALMA DE MALLORCA  
All Ashore: 8:00 am  
All Aboard: 4:45 pm  
Attire: Cruise Casual



**SHOWTIME: HEIDI BLICKENSTAFF**  
Walt Disney Theatre  
6:30 pm & 8:45 pm



**TANGLED: THE MUSICAL**  
Walt Disney Theatre  
6:30 pm & 8:45 pm



**DISNEY DREAMS: AN ENCHANTED CLASSIC**  
Walt Disney Theatre  
6:30 pm & 8:45 pm

Subject to change.

## WELCOME ABOARD!

### YOUR STATEROOM & LUGGAGE

Staterooms will be ready at 1:30 pm. To allow your Stateroom Host/ess time to prepare your room, please do not remove the blue stanchion straps. Stateroom hosts will deliver luggage throughout the day until 5:30 pm.

### STATEROOMS WITH BUNK BEDS

Bunk beds are recessed into the ceiling and will be prepared during evening turndown service by your Stateroom Host/ess.

### STATEROOM SAFE

Each stateroom is equipped with a secured storage safe. Instructions for use are located on the safe.

### TO CHANGE DINING ASSIGNMENT

Requests for different seating times will be taken today: 12:30 pm - 3:00 pm; Book in Lumière's, Deck 3, Midship or please dial 7-1831 and leave a voicemail.

### PALO DINING RESERVATIONS

Reservations are required and will be taken on a first come basis today: 12:30 pm - 3:00 pm Lumière's, Deck 3, Midship, or please dial 7-6843 and leave a voicemail.

### DINNER

6:00 pm - First seating 8:30 pm - Second seating A = Animator's Palate, Deck 4, Aft L = Lumière's, Deck 3, Midship C = Cariocas, Deck 3, Aft

Please check your Key To The World Card for details of your dining rotation, and bring it to your specific dining location.

There is no need to wait in line prior to dinner. Dining Rooms open at designated seating times and your table is reserved each night of your cruise.

**IMPORTANT NUMBERS**

Fire/Security: 7-3001

Medical Emergency: 7-3000

Health Center: 7-1923

# ADULT ACTIVITY HIGHLIGHTS

## 1820 SOCIETY (GUESTS 18-20 YEARS ONLY)

1820 Society is an exclusive option for young adult Guests. Come meet fellow passengers and learn about the excellent activities that the Disney Magic offers to create the perfect cruise experience.

## 80'S FLASHBACK

The 80's are back! Join your Cruise Staff team, in testing your 80's knowledge in this high energy 80's revival.

## ANYONE CAN COOK

Every Chef has a specialty, and ours is no exception. Get a taste of perfection with each day's recipe.

## KRAZY KARAOKE

Take to the stage, grab a microphone and sing your favorite tunes with your Club Host and DJ.

## MATCH YOUR MATE

It's time to play everyone's favorite couples game show, Match Your Mate!

Senses Spa & Salon has a variety of seminars and fitness classes available throughout the cruise. Pamper yourself with therapeutic spa treatments of heat, steam, rain and water in luxurious and tranquil private rooms. Deck 9, Forward.

## BEVERAGE SEMINARS

Your Beverage team has a host of tastings and seminars to entertain and educate you. Stop by Lumiere's, Deck 3, Midship, 12:00 - 3:00 pm or Guest Services, Deck 3, Midship after today to pre-book these experiences (nominal fee applies).

Seminars are only for Guests 21 and older. Guests 18 to 20, whose parent or guardian has completed a beverage consent form, may attend with their parent or guardian.

# FEATURED VARIETY ACTS THIS VOYAGE

## THE MAGIC & ILLUSION OF KYLE KNIGHT & MISTIE

Las Vegas based illusionists, Kyle Knight and Mistie, surprise their audience with a different approach to magic as they reveal guarded secrets, perform impossible feats while being totally surrounded, and allow their audience to get up close and involved in ways they've never seen before.

## THE MUSIC OF STRINGFEVER

Stringfever - the world's first genetically modified String Quartet comprises of brothers Giles, Ralph, Neal & their cousin Graham. They perform live on five and six string electric violins, viola and cello. Since their debut in 2003 they have delighted audiences in hundreds of cities in more than 20 countries.

## THE COMEDY & RHYTHM OF JUNNK

JunNk use bins, bottles, ladders and drainpipes to create a lively, hilarious and utterly enthralling fast paced show, providing a fresh outlook on today's modern entertainment scene.

## THE MUSIC & COMEDY OF JOHN CHARLES

With just his guitar, and his incredible singing voice, John Charles amazes his audience with his ability to combine music, comedy and audience interaction. No two shows are ever alike!

## THE ENERGETIC MUSIC OF ABBAFAB

AbbaFab is a collection of some of the finest musicians in the USA who have come together to produce the accurate reproduction of Abba's unique sound. This is so much more than a tribute band - The AbbaFab experience is something you will never forget!

## THE COMEDY & MAGIC OF CHRIS COX

Chris Cox is one of the stars of the award winning hit magic series Killer Magic and multi-award winning 'mind reader who can't read minds'. He's appeared in many television and stage shows around the globe, and continues to perform in the world's biggest magic show, Impossible.

## DISNEY ON BROADWAY STAR HEIDI BLICKENSTAFF

Featuring the vocal talents of Heidi Blickenstaff who starred as Ursula in Disney's The Little Mermaid on Broadway, as well as in Disney Theatrical's world premiere musical of Freaky Friday.

# FUN FOR ALL AGES HIGHLIGHTS

## ADVENTURES AWAY

Earn your status as V.I.P. sailors as your Cruise Director, your Disney Pals, and the Cruise Staff officially begin your "Adventures Away".

## A PIRATES LIFE FOR ME

Calling all Pirates, we be! If ye have an adventurous spirit or pirate savvy, come spin the "Wheel of Destiny" fer a treasure trove of fun be ripe for the takin' in this action packed pirate game show.

## CLUB NEW YEAR'S EVE

Club New Year's Eve, you won't want to miss this journey of musical genres throughout history and performances by some of your favorite Cruise Staff. Bring your family and help us count down to a brand new year!

## DISNEY JUNIOR PIRATE & PRINCESS DANCE PARTY

Calling all Pirates and Princesses! Come join us for a family dance party featuring music and fun activities from Jake & the Neverland Pirates and Sofia the First. Whether you favor tiaras or treasure chests, there's something for you at our Disney Junior Pirate & Princess Dance Party!

## DISNEY VACATION CLUB GROUP PREVIEW

Want to learn more about taking magical vacations year after year? Please see a Disney Vacation Club Cast Member on Deck 4, Midship, or call 7-2805 from your stateroom phone for more information about our interactive group presentation.

## FAMILY TALENT SHOW

Let your family take center stage and strut their stuff. Everyone has a talent, it's time to show off yours! Pre-register at the Port Adventures desk.

## JACK-JACK'S INCREDIBLE DIAPER DASH

Calling all baby cruisers! It's time to take to the mat to see who's the fastest crawler of the seven seas! Register your baby 15 minutes prior to the big race.

## JACKPOT BINGO

Join your Cruise Staff for family Bingo fun! Four cash prize games and great raffle prize packs to be won. Don't miss out on the fun!

## PIRATES IN THE CARIBBEAN DECK PARTY

Yer Disney Friends are all set for a swashbucklin' good time! It's a Pirate Celebration, me hearties! Hoist yourself to Deck 9 to enjoy a rowdy buccaneer bash we call Pirates IN the Caribbean Deck Party. (Weather Permitting)

## SALUDOS AMIGOS FIESTA

Come see what Donald and his friends are up to this time. Bring the family out to this interactive dance party featuring fun Latin music! Your family will learn to salsa, merengue and just have a Latin good time!

## SO YOU THINK YOU KNOW YOUR FAMILY?

This fun-filled family game show is always full of surprises. Find out how well you know, or don't know your family!

## 'TIL WE MEET AGAIN

The world-famous Disney Characters and some of your new friends from the Disney Magic stage shows bid you a charming farewell.

## WAKE UP WITH DISNEY JUNIOR

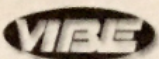
What happens when you experience unlimited fun with your favorite Disney Junior shows? You get an exciting dance party designed especially for preschoolers ages seven and under.

## WHO WANTS TO BE A MOUSEKETEER?

Your chance to get into the "hot seat" and win limited edition prizes. Or, play along as part of our live studio audience.



# YOUTH ACTIVITIES INFO & HIGHLIGHTS



## Dine & Play

As a convenience for families dining at 8:30 pm, our Youth Activities Counselors will be available at 9:30 pm at the entrance of Lumiere's and Carioca's and at 9:45 pm at the entrance of Animator's Palate to bring registered children to join the fun in Disney's Oceaneer Club and Disney's Oceaneer Lab.

## Pre-School Fun

Disney's Oceaneer Club is reserved for only those between 3-5 years of age. This is a time for them to become acclimated to Disney's Oceaneer Club, make new friends and join in on a lot of fun-filled programs and activities. Please note after Pre-School Fun has concluded, Disney's Oceaneer Club will be open for Secured Programming for ages 3-12.

## Youth Activities Open House

Open House is an opportunity for all to come and participate in a variety of exciting activities and free time in the Oceaneer Club, Oceaneer Lab, Edge and Vibe throughout the cruise. During these times secured programming will still be offered in the other venue for those looking to check their children into care.



3 - 12 years old

## BECOME IRON MAN!

Do you want to be Iron Man? Marvel's Avengers Academy invites you to virtually suit up in Iron Man's armor for an exciting interactive training gauntlet.

## MICKEY'S PUZZLE PLAYTIME

Come and play with Mickey & friends as they share their favorite games, puzzles and dances!

## TOY STORY BOOT CAMP

Join Corporal Green in our own version of boot camp as we learn how to have fun - The Toy Story way!



3 - 12 years old

## SUPER SLOPPY SCIENCE

Join Professor Make-O-Mess in some of the most extreme experiments you will ever see in the world of Super Sloppy Science!

## ANYONE CAN COOK

From our galley to yours. Join our chefs as they show you how to prepare delicious dishes.

## PISTON CUP

It's Dinoco time and you're part of the pit crew! Design your own race car and see if you've got what it takes to end up in the winner's circle!



11 - 14 years old

## HEROES VS. VILLAINS

Join your favorite hero or villain team on a series of activities that will take place throughout the cruise.

## THAT'S HILARIOUS

Ever wanted to show off your comedy skills? Then be a part of the cast for the crazy improv show "That's Hilarious" and put on a live show for your friends.



14 - 17 years old

## A PIRATE'S LIFE FOR ME

Yo ho, yo ho, a Pirate's Life for Me! Aarrgh me mateys! Put your knowledge to the test!

## HOMECOMING

Come and join your fellow teens in our very own version of "Homecoming" and dance the night away.

# BUENA VISTA THEATRE

Deck 5, Midship

## FEATURE MOVIES THIS VOYAGE

### FRIDAY - BARCELONA

5:15 pm	PG	Moana	
8:45 pm	PG	Moana	3D
11:00 pm	G	Born in China	

### SATURDAY - VILLEFRANCHE-SUR-MER

12:00 pm	PG-13	Guardians of the Galaxy Vol. 2	3D
2:45 pm	PG	Born in China	
5:00 pm	PG-13	POTC: Dead Men Tell No Tales	3D
8:45 pm	PG-13	POTC: Dead Men Tell No Tales	3D
11:15 pm	G	Cars 3	3D

### SUNDAY - LIVORNO

8:30 am	PG	Beauty and the Beast (2017)	
11:15 am	PG-13	POTC: Dead Men Tell No Tales	Open Captioning
2:00 pm	PG-13	Guardians of the Galaxy Vol. 2	
5:15 pm	G	Cars 3	Open Captioning
8:45 pm	G	Cars 3	
11:00 pm	PG	Disney's Newsies the Broadway Musical	

### MONDAY - OLBIA

8:30 am	G	Born in China	
10:45 am	G	Cars 3	
1:45 pm	PG-13	Rogue One: A Star Wars Story	3D
5:15 pm	PG-13	Guardians of the Galaxy Vol. 2	Open Captioning
8:15 pm	PG-13	Guardians of the Galaxy Vol. 2	3D
11:00 pm	PG	Beauty and the Beast (2017)	3D

### TUESDAY - DAY AT SEA

8:15 am	G	Cars 3	
1:45 pm	PG	Disney's Newsies the Broadway Musical	
5:15 pm	PG	Beauty and the Beast (2017)	3D
8:15 pm	PG	Beauty and the Beast (2017)	Open Captioning
10:45 pm	PG-13	Rogue One: A Star Wars Story	Open Captioning

### WEDNESDAY - CIVITAVECCHIA

8:30 am	PG	Moana	
11:00 am	PG-13	POTC: Dead Men Tell No Tales	3D
2:00 pm	PG-13	Guardians of the Galaxy Vol. 2	
5:15 pm	PG-13	Spider-Man: Homecoming	Open Captioning
8:15 pm	PG-13	Spider-Man: Homecoming	3D
10:45 pm	G	Cars 3	Open Captioning

### THURSDAY - NAPLES

12:00 pm	G	Cars 3	3D
2:30 pm	PG-13	Spider-Man: Homecoming	
5:15 pm	PG	Moana	3D
8:45 pm	PG	Moana	Open Captioning
11:00 pm	PG-13	Spider-Man: Homecoming	3D

### FRIDAY - PALERMO

8:30 am	G	Cars 3	
11:00 am	PG-13	Spider-Man: Homecoming	
1:45 pm	PG	Beauty and the Beast (2017)	3D
5:00 pm	PG-13	POTC: Dead Men Tell No Tales	Open Captioning
8:45 pm	PG-13	POTC: Dead Men Tell No Tales	
11:15 pm	PG	Moana	

### SATURDAY - DAY AT SEA

10:45 am	PG	Moana	Open Captioning
1:45 pm	PG-13	Spider-Man: Homecoming	3D
5:15 pm	PG-13	Guardians of the Galaxy Vol. 2	3D
8:15 pm	PG-13	Guardians of the Galaxy Vol. 2	3D
11:00 pm	PG-13	Spider-Man: Homecoming	Open Captioning

### SUNDAY - PALMA DE MALLORCA

8:30 am	G	Family Movie Fun Time: Cars 3	
10:45 am	PG-13	Spider-Man: Homecoming	
1:45 pm	PG-13	POTC: Dead Men Tell No Tales	
5:15 pm	PG	Beauty and the Beast (2017)	3D
8:00 pm	PG	Beauty and the Beast (2017)	Open Captioning
11:00 pm	G	Born in China	

Subject to change.

# MORE TO ENJOY ONBOARD

## NEW FALL 2018 ITINERARIES

New Fall 2018 Itineraries announced! Set sail for spectacular ports including first time sailing to Bermuda and Quebec City, Canada. Disney Cruise Line will continue sailing to sun-soaked destinations including Bahamian, Caribbean and even Baja cruises! Visit the Disney Vacation Planning desk, Deck 4, Midship for more information. Disney Vacation Planning tends to get busy on the last day of sailing. Don't miss the opportunity to plan your next Disney vacation.

## DISNEY VACATION CLUB® MEMBERS CELEBRATION

Members! Mix and mingle with other Members and learn how you can enhance your Membership! Please see a Disney Vacation Club Cast Member on Deck 4, Midship, or call 7-2805 from your stateroom phone for more information.

## PORT SHOPPING INFORMATION

Meet Gemma, your Port Shopping Guide, for hints, tips and know how when it comes to shopping ashore this cruise! Gemma has great recommendations for the whole family and will show you how to maximize your time in our ports of call with money saving tips! Visit Gemma at the Port Shopping Desk, Deck 3, Midship between 7:30 pm & 8:30 pm tonight for a free gift.

## Connect@Sea

We are now offering a NEW and improved Internet service to stay connected on your cruise like no other in the industry! Internet packages range from \$0.30 per MB - \$110.00 (1000 MB package). For more information contact your Connect@Sea Expert or Guest Services onboard. Possible service interruptions due to area configuration.

## CURRENCY EXCHANGE

Euros will be available for exchange at Guest Services, Deck 3, Midship, 24 hrs a day. Not all currencies will be exchanged onboard, so please check with Guest Services for further information.

## RELIGIOUS SERVICES

Groups who need a location to practice their faith may contact Guest Services for availability information.

## TRANSPORTATION INFORMATION

Should you wish to purchase transportation to the Barcelona airport, kindly proceed to Guest Services on Deck 3, Midship for further assistance.



## SENSES SPA & SALON



### DECK 9, FORWARD Extension 7-1465

#### RAINFOREST

Come enjoy our serenity lounge, with heated chairs, dry sauna, aromatherapy steam rooms and rainfall, misting showers.

Couples Cruise Pass - \$293 ~ Single Cruise Pass - \$209

#### IONITHERMIE

Lose between 1 - 8 inches? Speed up your metabolism. Firm muscle tone. Improve appearance of cellulite. \$155/1 session or \$497/5 sessions.

#### ONBOARD ACUPUNCTURE

Naturally effective for pain, arthritis, sea sickness, stress, digestion, weight loss, and much more. \$150/session or \$550/5 sessions.

#### ELEMIS BIOTEC

8 different Facial treatments available based on your specific concerns or needs. Technology turbo charges the concept of touch. The clinically proven result is visibly healthy, nourished and energized skin.

#### REJUVENATION SPA CONSULTATIONS

Ready to enhance your natural beauty? Book your free Facial Rejuvenation consultation with our Rejuvenation Doctor at the Senses Spa.

**AN 18% AUTO GRATUITY IS ADDED TO ALL SENSES SPA SERVICES.**

## MERCHANDISE SHOPPING



### DECK 4, FORWARD

#### MEDITERRANEAN MERCHANDISE FOR THE FAMILY

Step into White Caps, Deck 4, Forward, today to find an array of specially designed merchandise for the Disney Magic's Mediterranean itineraries. From tees to a magnet and ornament, you're sure to find something to delight the whole family!

#### HELPFUL SHOPPING TIP

While shopping onboard, you may collect your items from both stores before proceeding to checkout at any register. No need to have to wait in line in each store to pay for your items separately! Mickey's Mainsail and White Caps, Deck 4, Forward.

#### VISTA GALLERY - MORE TO ENJOY WHILE ONBOARD

Welcome onboard, take a minute to stroll through the Vista Gallery on Deck 4, Midship and discover special themed Disney artwork. Find a selection of fine art, giclees, lithographs, and original Disney art.

#### MARVEL SUPERHERO MERCHANDISE

Stop by Sea Treasures, Deck 3, Forward and discover exciting merchandise of some of your favorite Marvel Superheroes!

## SHUTTERS PHOTO GALLERY



### DECK 4, AFT

#### OUR CRUISE PHOTOS DIGITAL!

Your embarkation photos will be available for viewing at 6:30 pm. Visit Shutters, Deck 4, Aft, and drop your raffle coupon for a chance to win a 15 Digital Photo Package, with a \$199.95 value.

\*Terms and conditions apply.

Visit Shutters on Deck 4, Aft for more information.

#### FORMAL PORTRAITS

Formal portraits will be available Day at Sea 1 in the Lobby Atrium, Deck 3, Midship from 5:15pm - 6:15pm, 7:30pm - 8:45pm & 9:45pm - 10:30pm

#### PHOTO BOOK

Turn your magical vacation memories into an impressive keepsake, a personal one of a kind Photo Book. Fill every page with memories of your cruise vacation. Orders close at 9:00 pm on the last day of the cruise.

**PHOTOS ARE AVAILABLE FOR VIEWING ON OUR INTERACTIVE PHOTO KIOSKS APPROXIMATELY FIVE HOURS AFTER BEING TAKEN AND ARE ONLY AVAILABLE FOR PURCHASE DURING THIS CRUISE**

## IMPORTANT INFORMATION

### Security Notice

All Guests (including children) who wish to disembark the ship are required to present their Key to the World card at the gangway. A photo ID is also required for those Guests who are 18 years of age or older. Guests under the age of 18 are required to have a parent, guardian or other responsible adult sign an authorization form at the Guest Service Desk if they wish to go ashore unaccompanied or with any adult from another stateroom.

### Inclement Weather

For the safety of all Guests, outdoor events may be changed due to unforeseen weather conditions.

### Insect Repellent Advisory

The Centers for Disease Control and Prevention recommends wearing long-sleeved shirts and pants along with insect repellent to protect against mosquito bites and related illnesses when going ashore. Complimentary insect repellent is available on the pier as you exit the ship. Insect repellent is also available for purchase in White Caps. When using both sunscreen and insect repellent, use sunscreen first and apply insect repellent on top of sunscreen.

### Corridor Quiet Hours

As a courtesy to all our Guests, please recognize quiet hallway hours from 10:00 pm til 8:00 am.

### Environmental Message

With Disney's commitment to the Environment, please refrain from throwing anything over the Ship's side. Thank you!

### No Reserved Seats Policy

As a courtesy to all our Guests, we kindly advise that the saving of seats is not permitted in the Walt Disney Theatre, and the saving of the sun loungers is not permitted on Deck 9 and 10. Items left unattended will be returned to lost and found at Guest Services, Deck 3 Midship.

### Verandah Safety

Please do not leave any combustible materials on your balcony when not present in your stateroom for safety reasons.

### Smoking

For the comfort of our Guests, the following areas are designated as smoking areas:

\*Deck 9, Forward, Port Side by  
\*Deck 4, aft, port side from 6:00 pm to 6:00 am only (all of Deck 4 is non-smoking from 6:00 am to 6:00 pm)  
Smoking is prohibited inside all Guest staterooms and on stateroom verandahs. Guests found smoking in their staterooms or on their verandahs will be charged a \$250 stateroom recovery fee. Electronic cigarettes may only be used in designated smoking areas.

### Walt Disney Theatre

Theatrical performances may use artificial fog, strobe lights, pyrotechnics and other special effects. For the safety of our performers and the comfort of those around you, the use of any photography, video recording device or any electronic equipment is prohibited.

### Cold and Flu Reminder

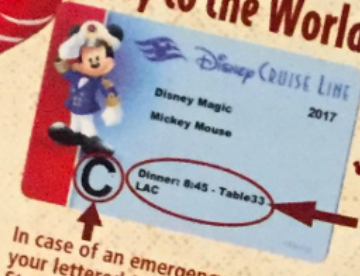
Please wash hands frequently and thoroughly, particularly before meals. Contact the Health Center by dialing 7-1923, should anyone in your party become ill.

DORIS J. B. BOSTON/STUBBINS

WELCOME ABOARD!



# Key to the World Card Information



In case of an emergency, your lettered Assembly Station is indicated here.


- Your dining time and table number for the cruise are located here.
- Dining locations and rotation are indicated by letters under your dinner time.
  - L - Lumiere's, Deck 3, Midship
  - A - Animator's Palate, Deck 4, Aft
  - C - Carioca's, Deck 3, Aft



## ADVENTURES AWAY

Earn your status as V.I.P. sailors! Join your Cruise Director, Clayton, your Disney pals and your Cruise Staff as we officially begin your "Adventures Away."

**Deck Stage, Deck 9, Midship, 4:45 pm**

Afternoon	1:45	2:00	2:15	2:30	2:45	3:00	3:15	3:30	3:45	4:00	4:15	4:30	4:45	5:00	5:15	5:30	5:45	6:00	6:15	6:30	6:45					
FUNNEL VISION			Poolside Jams Deck 9 Stage	Escencia Dancers Deck 9 Stage					<div style="text-align: center;"> <b>Mandatory Guest Assembly Drill</b>  <b>4:15 pm</b>                      (All Guests must attend)                       All ship services will be suspended during this time.                       Refer to the posted drill instructions on the back of your stateroom door prior to heading to Deck 4. Please bring your Key to the World Card.                       You will not need your life jacket for the Guest Assembly Drill.                         Your Assembly Station is indicated on your Key To The World card.                 </div>				Adventures Away! Deck 9 Stage			Bolt (PG) Funnel Vision										
BUENA VISTA THEATRE			Port Shopping Talk Buena Vista Theatre											Moana (PG) Duration: 1 Hour 53 Minutes												
CHARACTERS																						Mickey DK4 Mid (S)				
FUN FOR ALL AGES		Walking Ship Tour Preludes	Walking Ship Tour Preludes		Tour del Barco Preludes	Orientación en Español Promenade Lounge																				Walt Disney Theatre
ADULTS		FireLites LIVE Quiet Cove Pool	FireLites LIVE Quiet Cove Pool		Spa Open House Senses Spa & Salon	Spa Raffle Senses Spa & Salon																				Ed Kelly LIVE Keys
VIBE 14-17 YEARS OLD		Youth Activities Open House & Registration																								
EDGE 11-14 YEARS OLD		Youth Activities Open House & Registration																								
OCEANEER LAB 5-12 YEARS OLD		Youth Activities Open House & Registration																								
OCEANEER CLUB 3-12 YEARS OLD		Youth Activities Open House & Registration																								



Evening	7:00	7:15	7:30	7:45	8:00	8:15	8:30	8:45	9:00	9:15	9:30	9:45	10:00	10:15	10:30	10:45	11:00	11:15	11:30	11:45	12:00	
FUNNEL VISION																						
BUENA VISTA THEATRE																						
CHARACTERS																						
FUN FOR ALL AGES																						
ADULTS																						
VIBE 14-17 YEARS OLD																						
EDGE 11-14 YEARS OLD																						
OCEANEER LAB 5-12 YEARS OLD																						
OCEANEER CLUB 3-12 YEARS OLD																						

DRINK



# Be our Guest!

WELCOME ABOARD SHIP!

## WALT DISNEY THEATRE

Deck 4, Forward  
6:30 pm & 8:45 pm

As a courtesy to all Guests, we kindly advise that the saving of seats is not permitted in the Walt Disney Theatre.

Assistance is available at the entrance to the Walt Disney Theatre 30 minutes prior to show time.

### Character Meet & Greet Ticket Distribution

Port Adventures Desk, Deck 3, Midship - 12:00 pm - 3:00 pm  
For Guests who did not reserve meet and greets online, a limited number of tickets are available today to meet some of your favorite Disney friends.

#### Princess Gathering ~ Frozen Gathering

#### VIP Character Breakfast

Tickets are required for each of these meet and greets. Space is limited.

### Character Appearances

**ADVENTURES AWAY**  
Deck 9 Stage - 4:45 pm

**GOOFY**  
DK4 Mid (S)  
5:30 pm & 10:00 pm

**MICKEY MOUSE**  
DK4 Mid (S)  
6:00 pm & 8:00 pm  
Lobby Atrium (P) - 9:45 pm

**MINNIE MOUSE**  
DK4 Mid (S) - 7:30 pm  
Lobby Atrium (P) - 10:15 pm

**PLUTO**  
DK4 Mid (S) - 10:30 pm



(P) - Port Side, (S) Starboard Side

For details of daily Disney character appearances, refer to the character line on your Navigator Grid, or the digital character board in the Lobby Atrium.

## SHIP DIRECTORY

### YOUTH ACTIVITIES

DISNEY'S OCEANEER CLUB	DECK 5, Mid	12:30 PM - 3:45 PM 4:45 PM - 12:00 AM
DISNEY'S OCEANEER LAB	DECK 5, Mid	12:30 PM - 3:45 PM 4:45 PM - 12:00 AM
EDGE	DECK 9, Mid	12:30 PM - 3:45 PM 4:45 PM - 12:00 AM
IT'S A SMALL WORLD NURSERY	DECK 5, Aft	12:30 PM - 3:45 PM 4:45 PM - 11:00 PM
VIBE	DECK 10, Mid	12:30 PM - 3:45 PM 4:45 PM - 12:00 AM

### POOLS

\*Children under 12 years of age must have adult supervision in all pools.

AQUADUNK	DECK 10, Mid	12:00 PM - 3:00 PM 6:00 PM - 8:00 PM
AQUALAB	DECK 9, Aft	12:00 PM - 3:30 PM 4:30 PM - 8:00 PM
GOOFY'S POOL	DECK 9, Mid	12:00 PM - 3:30 PM 6:00 PM - 10:00 PM
NEPHEWS' SPLASH ZONE	DECK 9, Aft	12:00 PM - 3:30 PM 4:30 PM - 6:00 PM
QUIET COVE POOL (18+)	DECK 9, Fwd	12:00 PM - 11:00 PM
TWIST 'N' SPOUT	DECK 9, Aft	12:00 PM - 3:00 PM 4:30 PM - 9:00 PM

Please note, "selfie sticks" are not permitted in the pools or on the slides.  
Complimentary pool vests are available for children to use in the pools onboard.  
They are located on the pool deck.

### RECREATION

PORT ADVENTURES DESK	DECK 3, Mid	12:00 PM - 3:30 PM 4:30 PM - 6:00 PM 7:00 PM - 8:30 PM
SENSES FITNESS CENTER (18+)	DECK 9, Fwd	11:30 AM - 10:00 PM
WIDE WORLD OF SPORTS DECK	DECK 10, Fwd	24 HOURS

### GENERAL INFORMATION

BUENA VISTA THEATRE	DECK 5, Aft	SHOWTIMES
CONNECT@SEA DESK	DECK 3, Aft	1:00 PM - 4:00 PM 7:00 PM - 10:00 PM
DISNEY VACATION CLUB DESK	DECK 4, Mid	6:30 PM - 10:00 PM
DISNEY VACATION PLANNING	DECK 4, Mid	7:30 PM - 8:30 PM
FUNNEL VISION	DECK 9, Mid	SHOWTIMES
GUEST SERVICES	DECK 3, Mid	24 HOURS
HAIR BRADING	DECK 9, Mid	4:30 PM - 7:00 PM
MEDICAL HEALTH CENTER	DECK 1, Fwd	7:00 PM - 9:00 PM
PORT SHOPPING DESK	DECK 3, Mid	7:30 PM - 8:30 PM
PRELUDES	DECK 4, Fwd	5:30 PM - 9:00 PM
SENSES SPA AND SALON	DECK 9, Fwd	11:30 AM - 10:00 PM
SHUTTERS PHOTO GALLERY	DECK 4, Aft	6:00 PM - 10:30 PM
WALT DISNEY THEATRE	DECK 4, Fwd	SHOWTIMES
BIBBIDI BOBBIDI BOUTIQUE	DECK 10, Fwd	12:00 PM - 3:00 PM 5:00 PM - 9:00 PM
MICKEY'S MAINSAIL	DECK 4, Fwd	6:00 PM - 11:00 PM
QUACKS	DECK 9, Mid	6:00 PM - 11:00 PM
SEA TREASURES	DECK 3, Fwd	6:00 PM - 11:00 PM
VISTA GALLERY	DECK 4, Mid	6:00 PM - 11:00 PM
WHITE CAPS	DECK 4, Fwd	6:00 PM - 11:00 PM

DUE TO PORT REGULATIONS, WHEN THE SHIP IS DOCKED, THE STORES MUST REMAIN CLOSED.

## EVENING ATTIRE

Cruise Casual

WEATHER FORECAST Today: High

## DINING & LOUNGES

### LUNCH

CABANAS	DECK 9, Aft	11:45 AM - 3:15 PM
CARIOCA'S	DECK 3, Aft	11:45 AM - 2:15 PM
DAISY'S DE LITES	DECK 9, Aft	12:00 PM - 3:30 PM 4:15 PM - 6:00 PM
PETE'S BOILER BITES	DECK 9, Aft	12:00 PM - 3:30 PM 4:15 PM - 6:00 PM
PINOCCHIO'S PIZZERIA	DECK 9, Mid	12:00 PM - 3:30 PM 4:15 PM - 6:00 PM

### DINNER

ANIMATOR'S PALATE	DECK 4, Aft	6:00 PM & 8:30 PM
CARIOCA'S	DECK 3, Aft	6:00 PM & 8:30 PM
LUMIERE'S	DECK 3, Mid	6:00 PM & 8:30 PM
PALO (18+)	FOR RESERVATIONS CALL 7-843	6:00 PM - 8:30 PM
PETE'S BOILER BITES	DECK 9, Aft	6:00 PM - 10:00 PM

### LATE NIGHT SNACKS

O'GILLS PUB	DECK 3, Fwd	10:45 PM - 11:30 PM
PINOCCHIO'S PIZZERIA	DECK 9, Mid	9:30 PM - 12:00 AM
PROMENADE LOUNGE	DECK 3, Aft	10:45 PM - 11:30 PM

### ADDED FEATURES

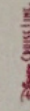
EYE SCREAM	DECK 9, Aft	12:00 PM - 3:30 PM 4:15 PM - 11:00 PM
BEVERAGE STATION	DECK 9, Aft	24 HOURS
ROOM SERVICE	DIAL 7-4330	24 HOURS

### ENTERTAINMENT - LOUNGES - BARS

Adults must be 21 and older to consume alcoholic beverages.

AFTER HOURS	DECK 3, Fwd	(AFTER 9:00 PM, ADULTS ONLY)
COVE CAFE (18+)	DECK 9, Mid	11:45 AM - 12:00 AM
D LOUNGE	DECK 4, Mid	SHOWTIMES
FATHOMS (18+)	DECK 3, Fwd	7:15 PM - 2:00 AM
FROZCOEN TREATS	DECK 9, Aft	11:45 AM - 6:00 PM
KEYS (18+)	DECK 3, Fwd	7:00 PM - 12:00 AM
O'GILLS PUB (18+)	DECK 3, Fwd	11:45 AM - 12:00 AM
PRELUDES	DECK 4, Fwd	5:30 PM - 9:00 PM
PROMENADE LOUNGE	DECK 3, Aft	11:45 AM - 12:00 AM
PINOCCHIO'S PIZZERIA	DECK 9, Mid	11:45 AM - 12:00 AM
SIGNALS (18+)	DECK 9, Fwd	11:45 AM - 9:00 PM

Public Health Advisory: Consuming raw or undercooked meats, poultry, seafood, shellfish, or eggs may increase your risk for foodborne illness, especially if you have certain medical condition.



# PORT ADVENTURES

Explore and more with our carefully selected Port Adventures. Pass by the Port Adventures Desk, Deck 3, Midship to find out more.

## IMPORTANT NUMBERS

Fire/Security: 7-3001  
Medical Emergency: 7-3000  
Health Center: 7-1923