

# PERSONAL NAVIGATOR

FRIDAY, AUGUST 12, 2016



Sunrise: 6:59 am Sunset: 8:49 pm  
Evening Attire: Cruise Casual  
All Ashore: 8:00 am  
All Aboard: 4:45 pm  
Today: Partly Sunny High: 80°F/27°C  
Tomorrow: Partly Sunny High: 78°F/26°C  
PALMA DE MALLORCA, SPAIN

## Disney DREAMS

AN ENCHANTED CLASSIC

*In this spectacular fantasy, a little girl discovers the power of her dreams. Fly through the air with Peter Pan, your imagination, and many of your favorite Disney stories – including Disney's newest classic, Frozen! With a little Faith, Trust and Pixie Dust, you'll see that dreams really can come true!*

WALT DISNEY THEATRE

Deck 4, Forward

6:30 pm & 8:45 pm

As a courtesy to all Guests, we kindly advise that the saving of seats is **not** permitted in the Walt Disney Theatre.



Assistance available at the entrance to the Walt Disney Theatre 30 minutes prior to show time.

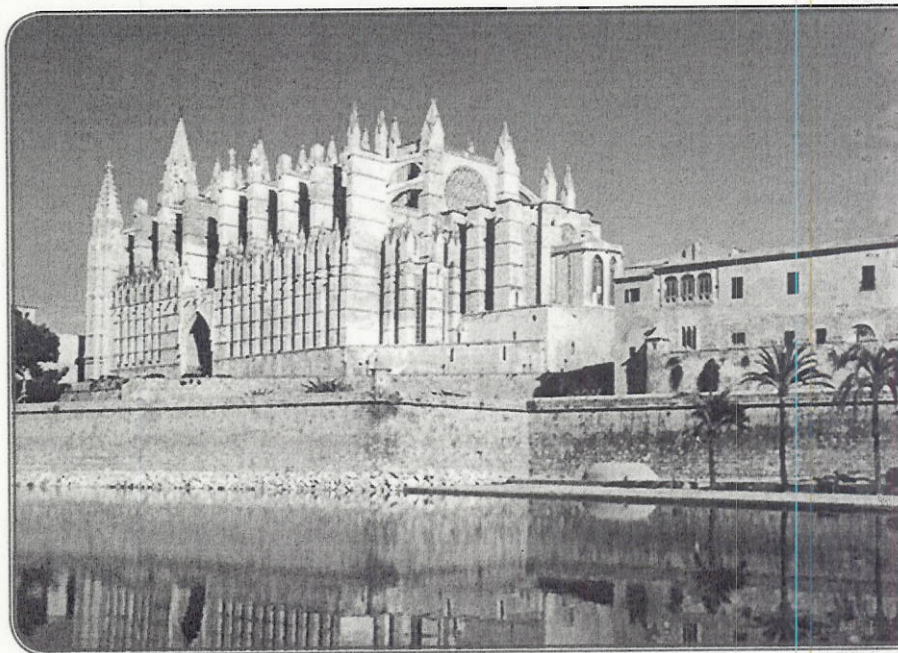
## Welcome to Palma de Mallorca, Spain

Palma de Mallorca is the capital city of the Balearic Islands and nearly two-thirds of its total population lives in Palma. The origins of the Balearic Island civilization lie in prehistoric times. Massive stone monuments dating as far back as the 13th century BC, can still be found on some parts of the island.

These stone monuments are believed to have had some military or religious function during the period of the Talaiot culture.

Romans conquered the islands in 123 BC, naming Palma, "Palmera" for the abundance of palm trees that were on the island. Arabic culture soon followed and has left its mark on the life of the island. In 1229, the forces of King Jaime I of Aragon regained the islands and Mallorca was then declared an independent Christian Kingdom.

Today, in addition to the bustling tourist trade, farming is the chief occupation and the island grows large amounts of almonds, olives, figs, citrus and grapes for the production of local wines.



### Debark Talk Broadcast

Important information regarding disembarkation procedures for your journey home will be covered in this debarkation briefing. The broadcast will be shown continuously on channel 24-2 of your stateroom television for your convenience.

Thank you in advance for completing your comment card.

### DINNER MENU

Animator's Palate: 'Til We Meet Again  
Carioca's: 'Til We Meet Again  
Lumiere's: 'Til We Meet Again

### DRINK OF THE DAY

Yellow Bird (Alcoholic)  
Cranberry No-Jito (Non-Alcoholic)

### IMPORTANT NUMBERS

Fire/Security: 7-300  
Medical Emergency: 7-300  
Health Center: 7-192



# ADULT ACTIVITY HIGHLIGHTS



## SENSES SPA FITNESS CLASSES & SEMINARS

*Sunrise Stretch* - Senses Spa Fitness Center - 7:00 am  
*Fab Abs* - Senses Spa Fitness Center - 7:30 am  
*Body Sculpt Boot Camp* (Nom. Fee) - Senses Spa Fitness Center - 8:00 am  
*Yoga* - Senses Spa Fitness Center - 4:00 pm  
*Complimentary Footprint Analysis* - Senses Spa Fitness Center - 5:00 pm



## 1820 SOCIETY: 2000'S MUSIC CHALLENGE

*O'Gills Pub, Deck 3, Forward - 5:30 pm*

Join your Cruise Staff as we navigate our way through the music of the 2000's.

## 1820 SOCIETY: FAREWELL

*O'Gills Pub, Deck 3, Forward - 10:00 pm*

Join your Cruise Staff and your new friends in this last gathering for some fun.

## LIVE IRISH MUSIC WITH GIRSA

*O'Gills Pub, Deck 3, Forward - 7:15 pm, 8:15 pm & 10:00 pm*

Join Girsra as they play traditional Irish music live for your listening pleasure.

## 90'S MUSIC TRIVIA

*O'Gills Pub, Deck 3, Forward - 7:45 pm*

"If you Wannabe" the winner, then join us as we test your 90's music knowledge.

## MAJORITY RULES

*Fathoms, Deck 3, Forward - 10:15 pm*

Join your Club Host, to find out who really rules!

## CRUISE STAFF FAREWELL

*Fathoms, Deck 3, Forward - 11:15 pm*

Join your Club Host and the Cruise Staff team and see our version of the funniest skit on the high seas, "If I Were Not Upon The Sea."



# FUN FOR ALL AGES HIGHLIGHTS



## GOOD MORNING DISNEY MAGIC

Tune in to channel 24-2 as your Cruise Director highlights the upcoming events and activities for the day.

## WALK A MILE

*Prehudes, Deck 4, Forward - 12:30 pm*

Join your Cruise Staff for a brisk walk around the deck.

## DISNEY TRIVIA

*Promenade Lounge, Deck 3, Aft - 1:15 pm*

Navigate your way through a round of questions to test how much you really know about Disney.

## CRAFTS: MEMORY PAGES

*Promenade Lounge, Deck 3, Aft - 1:45 pm*

Join your Cruise Staff and make fun Memory Pages.

## WHO AM I?

*Promenade Lounge, Deck 3, Aft - 2:45 pm*

Join your Cruise Staff in a fun and hilarious game where our panel has to guess who they are.

## XBOX CHALLENGE

*Promenade Lounge, Deck 3, Aft - 3:45 pm*

Join your Cruise Staff for some Xbox fun!

## TODDLER TIME

*Promenade Lounge, Deck 3, Aft - 4:30 pm*

Join us for some fun activities that your toddler is sure to enjoy.

## A CONVERSATION WITH ALTON FITZGERALD WHITE

*O'Gills Pub, Deck 3, Forward - 4:45 pm*

Join Alton Fitzgerald White, who starred as King Mufasa in Disney's *The Lion King* on Broadway for over 4,300 performances, for an exclusive Q & A session.



## DISNEY VACATION CLUB GROUP PREVIEW

*D Lounge, Deck 4, Midship - 5:00 pm*

Want to learn more about taking magical vacations year after year? Please see a Disney Vacation Club representative on Deck 4, Midship, or call 7-2805 from your stateroom phone for more information about our interactive group presentation.

## JEWISH SABBATH

*Keys, Deck 3, Forward - 5:15 pm*

A quiet space is reserved for those wishing to conduct their own service.



## FAREWELL KARAOKE

*D Lounge, Deck 4, Midship - 10:45 pm*

Bring along the entire family for one more round of karaoke. This is your last opportunity to grab the mic and sing along to your favorite song.



## MOVIE SPECIAL: PETE'S DRAGON (PG)

*Walt Disney Theatre, Deck 4, Forward - 11:00 pm*

A reimagining of Disney's cherished family film, *Pete's Dragon* is the adventure of an orphaned boy named Pete and his best friend Elliot, who just so happens to be a dragon.



# YOUTH ACTIVITIES HIGHLIGHTS

## DINE & PLAY

As a convenience for families dining at 8:45 p.m., our Youth Activities Counselors will be available at 9:45 p.m. at the entrance of Lumiere's, Carioca's and Animator's Palate to bring registered children to join the fun in Disney's Oceaneer Club and Disney's Oceaneer Lab.



Deck 5, Aft (7-5864)

8:00 am - 11:00 pm

Infants and Toddlers can enjoy toys and activities at It's a small world nursery. Reservations are first come, first served so please stop by!



Deck 5, Midship (7-1439)  
(3-12 years old)

8:00 am - 12:00 am

## THE ROYAL BALL

4:30 pm

Attend your own Royal Ball and learn to be a prince or a princess.

## BECOME IRON MAN!

5:15 pm

Do you want to be Iron Man? Marvel's Avengers Academy invites you to virtually suit up in Iron Man's armor for an exciting interactive training gauntlet.



Deck 5, Midship (7-1445)  
(3-12 years old)

11:00 am - 12:00 am

## ANYONE CAN COOK

7:45 pm

Anyone can cook as we work together to create some of our favorite treats.

## SUPER SLOPPY SCIENCE

10:15 pm

Join Professor Make-O-Mess in some of the most extreme experiments you will ever see in the world of Super Sloppy Science!



Deck 9, Midship (7-5816)  
(11-14 years old)

11:00 am - 12:00 am

## ANIMATION ANTICS

6:15 pm

Learn simple animation techniques and then put your new skills to use by drawing some of your favorite Disney Characters.

## GENDER WARS

9:00 pm

Join us as we find out who really are the kings and queens of the castle.



Deck 10, Midship (7-18517)  
(14-17 years old)

12:00 pm - 1:00 am

## GAGA BALL

7:30 pm

Come take part in this great game as you try to outlast your opponents.

## ZOMBIFIED PREMIERE

10:45 pm

It's premiere night for the latest zombie movie starring YOU!

# BUENA VISTA THEATRE

Deck 5, Aft  
Today's Movies



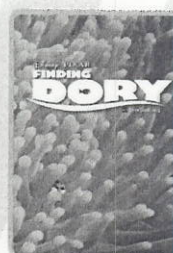
Family Fun Movie

8:30 am  
Duration:  
1 hr 42 mins  
Rating: PG



**DOLBY 3D**

10:30 am  
Duration:  
1 hr 46 mins  
Rating: PG



**OC Open Captioning**

12:45 pm  
Duration:  
1 hr 45 mins  
Rating: PG



3:00 pm, 5:15 pm &  
7:45 pm  
Duration: 1 hr 42 mins  
Rating: PG



**DOLBY 3D**

11:00 pm  
Duration:  
1 hr 42 mins  
Rating: PG



## VARIETY ACT

Featuring the Vocal Harmonies of The FlyBoys, as they entertain the you in this fun-filled show.

*Fathoms,  
Deck 3, Forward  
7:45 pm (Families)  
10:45 pm (18+)*



## TALENT SHOW

Your fellow Guests have rehearsed and are ready to show off their talents.

(A rehearsal has been scheduled today at 4:00 pm in D Lounge for those who have already registered.)

*D Lounge,  
Deck 4, Midship  
7:45 pm*

## YOUTH ACTIVITIES OPEN HOUSE

Open House is an opportunity for all to come and participate in a variety of exciting activities and free time in the Oceaneer Club, Oceaneer Lab, it's a small world nursery, Vibe and Edge throughout the cruise. During these times secured programming will still be offered in the other venue for those looking to check their children into care.

Edge: 11:00 am - 12:00 pm & 7:30 pm - 9:00 pm

Vibe: 12:00 pm - 1:00 pm & 6:00 pm - 7:30 pm

Disney's Oceaneer Club: 11:00 am - 2:00 pm & 6:00 pm - 7:00 pm

Disney's Oceaneer Lab: 2:00 pm - 4:30 pm



# MORE TO ENJOY WHILE ONBOARD



## BOOK YOUR NEXT DISNEY VACATION TODAY!

If you're thinking about booking a future Disney cruise or Adventures by Disney trip, today is your last chance to save with special offers only available onboard! Visit the Disney Vacation Planning desk, Deck 4, Midship, for more information.

## DISNEY VACATION CLUB® GROUP PREVIEW

Want to learn more about taking magical vacations year after year? Please see a Disney Vacation Club representative on Deck 4, Midship, or call 7-2805 from your stateroom phone for more information about our interactive group presentation.

## PORT SHOPPING INFORMATION

Come see Michael, your Port Shopping Guide at the Port Shopping Desk, Deck 3, Midship between 7:30 pm - 8:30 pm. Find out about all the amazing shopping available to you in our ports of calls this cruise. Michael will help you find that once in a life time keepsake to commemorate your cruise vacation.



**SENSES**  
SPA & SALON

## PAMPER PACKAGE

- 50 minute Full Body Massage
  - Foot & Ankle Massage
  - Indian Scalp Massage
  - 25 Minute Booster Facial
- All for \$149

Senses Spa & Salon, Deck 9, Forward, Extension 7-1465

**Disney PARKS**

## PANDORA

Featuring hand-finished .925 sterling silver and 14K gold charms inspired by some of Disney's most beloved characters.

WHITE CAPS | DECK 4, FORWARD



## FINAL DAY TO PURCHASE YOUR CRUISE MEMORIES

Today and tonight will be your last chance to purchase your digital photo packages, photo prints and Photo books. Shutters on Deck 4, Aft will be open until 11:00 pm, so don't miss out on bringing home all those cruise memories!

## Connect @ Sea

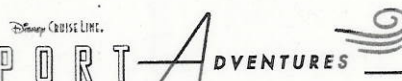
We are now offering a NEW and improved Internet service to stay connected on your cruise like no other in the industry! Internet packages range from \$0.25 per MB - \$89.00 (1000 MB package). For more information contact your Connect@Sea Expert or Guest Services onboard. Possible service interruptions due to area configuration.

## EXPRESS CHECK OUT

If you have a credit card on file, you qualify for express check out. No need to visit Guest Services to settle your account.

## EXPRESS WALK OFF

This option allows you to take your luggage off the ship at your leisure once the ship has been cleared by the local authorities. You won't need to wait for your luggage to enter the terminal and there is no need to claim it inside the terminal building. Please note that no assistance with luggage is provided for this option.



Ask about our Barcelona Debarking Tours like the Montserrat half-day. On this tour you will ascend the towering Montserrat Mountain range via railway and tour the world famous monastery including the Shrine of Our Lady of Montserrat or "La Moreneta." Then enjoy some free time for souvenir shopping before heading to your Disney Cruise Line Hotel. Ask about availability of tours at the Port Adventures Desk, Deck 3, Midship.

## SHOPPING

### LAST CHANCE TO VISIT THE VISTA GALLERY

Don't miss your last chance to visit the Vista Gallery where you can admire beautiful artwork created by various celebrated artists and featuring some of your favorite Disney characters. From original canvas paintings to smaller print copies, the Vista Gallery offers the opportunity for you to take some of the magic home! Deck 4, Midship.

### MEDITERRANEAN MERCHANDISE

Cherish the memories made during your voyage by picking up a special Mediterranean sailing scrapbook kit and photo album. Mickey's Mainsail, Deck 4, Forward.

### H2O PLUS SPA PRODUCTS

Can't get enough of your stateroom's moisturizing H2O Plus Spa products? From shampoo and conditioner to body lotion and after sun care, take home their marine-rich formulas available in White Caps, Deck 4, Forward.

### ATLANTIS GEMS

Atlantis Gems invites you to look at the imaginative creations of Morganite and Zultanite and custom cut gems when you visit White Caps. Don't miss your final chance on this sailing to discover the jewelry piece that best suits your style! Deck 4, Forward.

### DISNEY CRUISE LINE BACKPACK

Head over to the onboard shops, Deck 4, Forward, where you can purchase a Disney Cruise Line backpack for \$19.99 with any merchandise purchase of \$50.00 or more. While supplies last. Offer subject to restrictions and change without notice.

## IMPORTANT INFORMATION

### Security Notice

All Guests (including Children) who wish to disembark or embark the ship are required to present their Key to the World card at the gangway. A photo ID is also required for those Guests who are 18 years of age or older. Guests under the age of 18 are required to have a parent, guardian or other responsible adult sign an authorization form at the Guest Service Desk if they wish to go ashore unaccompanied or with any adult from another stateroom.

### Insect Repellent Advisory

Protect against mosquito bites and related illnesses when going ashore. Insect repellent is available for purchase in White Caps. When using both sunscreen and insect repellent, use sunscreen first and apply insect repellent on top of sunscreen.

### Cold and Flu Reminder

Please wash hands frequently and thoroughly, particularly before meals. Contact the Health Center by dialing 7-1923, should anyone in your party become ill.

### Inclement Weather

For the safety of all Guests, outdoor events may be changed due to unforeseen weather conditions.

### Corridor Quiet Hours

As a courtesy to all our Guests, please recognize quiet hallway hours from 10:00 p.m. till 8:00 a.m.

### Environmental Message

With Disney's commitment to the Environment please refrain from throwing anything over the Ship's side. Thank you.

### No Reserved Seats Policy

As a courtesy to all Guests we kindly advise that the saving of seats is not permitted in the Walt Disney Theatre, and the saving of the sun loungers is not permitted on Deck 9 and 10. Items left unattended will be returned to lost and found at Guest Services, Deck 3, Midship.

### Smoking

For the comfort of our guests, the following areas are designated as smoking areas:  
• Deck 9 Forward, Port Side  
• Deck 4, Starboard Side from 6:00 p.m. to 6:00 a.m. only (all of Deck 4 is non-smoking from 6:00 a.m. to 6:00 p.m.)  
Smoking is prohibited inside all guest staterooms and on stateroom verandahs. Guests found smoking in their staterooms or on their verandahs will be charged a \$250 stateroom recovery fee.

### Walt Disney Theatre


Theatrical performances may use artificial fog, strobe lights, pyrotechnics and other special effects. For the safety of our performers and the comfort of those around you, the use of any photograph video recording device or any electronic equipment is prohibited.

### Verandah Safety

Please do not leave any combustible materials on your balcony when not present in your stateroom for safety reasons.



Morning	8:30	8:45	9:00	9:15	9:30	9:45	10:00	10:15	10:30	10:45	11:00	11:15	11:30	11:45	12:00	12:15	12:30	12:45	1:00	1:15	1:30						
FUNNEL VISION	Tinker Bell (G) Funnel Vision						Alice in Wonderland (Classic) (G) Funnel Vision						The Little Mermaid (G) Funnel Vision														
BUENA VISTA THEATRE	Family Movie Fun Time: Pete's Dragon (PG) Duration: 1 Hour 30 Minutes						The Jungle Book (2016) (PG)  DOLBY 3D Duration: 1 Hour 46 Minutes						Finding Dory (PG)  Open Captioning Duration: 1 Hour 45 Minutes														
CHARACTERS																											
FUN FOR ALL AGES											Youth Activities Open House						Walk A Mile Preludes				Disney Trivia Promenade Lounge						
											Edge						Become Iron Man! Disney's Oceaneer Club										
ADULTS	Friends of Bill W. Keys																										
VIBE 14-17 YEARS OLD											Youth Activities Open House					Wii Competition											
EDGE 11-14 YEARS OLD											Youth Activities Open House					Trivia Time				Chess & Checkers							
OCEANEER LAB 3-12 YEARS OLD											Parachute Games					Relay Games			Lunch			Pathfinder					
OCEANEER CLUB 3-12 YEARS OLD	Play-Doh Fun					Memory Wall			Four Square			Youth Activities Open House					Become Iron Man!										

Afternoon	1:45	2:00	2:15	2:30	2:45	3:00	3:15	3:30	3:45	4:00	4:15	4:30	4:45	5:00	5:15	5:30	5:45	6:00	6:15	6:30	6:45							
FUNNEL VISION	Adventures in Babysitting - (TV-G) Funnel Vision						Frozen (PG) Funnel Vision						Descendants - (TV-G) Funnel Vision															
BUENA VISTA THEATRE							Pete's Dragon (PG) Duration: 1 Hour 30 Minutes						Pete's Dragon (PG) Duration: 1 Hour 30 Minutes															
CHARACTERS													Daisy DK4 Mid (S)						Pluto DK4 Mid (S)									
FUN FOR ALL AGES	Crafts: Memory Pages Promenade Lounge				Who Am I? Promenade Lounge				Xbox Challenge Promenade Lounge				A Conversation with Alton Fitzgerald White O'Gills Pub				Live Piano with Bernadett Bihari Promenade Lounge											
	GAGA Ball 🎉 Disney's Oceaneer Lab				Wii Challenge 🎮 Disney's Oceaneer Lab				Super Sloppy Science 🧪 Disney's Oceaneer Lab				Toddler Time Promenade Lounge				Jewish Sabbath Keys								Classic Jazz with Fine Whines Lobby Atrium			
ADULTS											1820 Society: 2000's Music Challenge O'Gills Pub																	
									Yoga Senses Spa Fitness Center				Disney Vacation Club Group Preview D Lounge															
VIBE 14-17 YEARS OLD	Craft Corner				Trivia Challenge				Game Challenge				Teen Choice				Youth Activities Open House 🎉											
EDGE 11-14 YEARS OLD	Chess and Checkers Challenge				Ultimate Challenge				Tween Choice				GAGA Ball				Animation Antics											
OCEANEER LAB 3-12 YEARS OLD	Youth Activities Open House 🎉								GAGA Ball								Animation Antics				Dinner							
	GAGA Ball 🎉				Wii Challenge 🎮				Super Sloppy Science 🧪																			
OCEANEER CLUB 3-12 YEARS OLD	Open House		Relay Games				Scavenger Hunt				The Royal Ball				Become Iron Man!				Youth Activities Open House 🎉									

Evening	7:00	7:15	7:30	7:45	8:00	8:15	8:30	8:45	9:00	9:15	9:30	9:45	10:00	10:15	10:30	10:45	11:00	11:15	11:30	11:45	12:00				
FUNNEL VISION				Tomorrowland (PG) Funnel Vision									Bedtime Stories (PG) Funnel Vision												
BUENA VISTA THEATRE				Pete's Dragon (PG) Duration: 1 Hour 30 Minutes									Pete's Dragon (PG)  DOLBY.3D Duration: 1 Hour 30 Minutes												
CHARACTERS				Goofy DK4 Mid (S)			Mickey DK4 Mid (S)																		
FUN FOR ALL AGES																									Rated (PG) 1 hr 30 mins
				Family Talent Show D Lounge									Live Music with Andrea & Rafaela Promenade Lounge			Family Superstar Karaoke D Lounge									
ADULTS	Girsa LIVE O'Gills Pub		90's Music Trivia O'Gills Pub		Girsa LIVE O'Gills Pub						Cruise Staff DJ Fathoms		Majority Rules Fathoms				Cruise Staff Farewell Fathoms		Cruise Staff DJ Fathoms						
			Live Piano with Aileen de la Cruz Keys								1820 Society: Farewell O'Gills Pub														
VIBE 14-17 YEARS OLD	Open House		GAGA Ball		Smoothie Time		Homecoming Prep		Game Challenge		How Well Do You Know Your Counselor?		Zombified Premiere				Final Farewell								
EDGE 11-14 YEARS OLD	Smoothie Time		Youth Activities Open House				Gender Wars				How Well Do You Know Your Counselor?		Final Farewell Slideshow		Final Farewell										
OCEANEER LAB 3-12 YEARS OLD	Talent Show			Anyone Can Cook			Cards Tournament		Final Farewell		Game Challenge		Super Sloppy Science			Glow Jam									
OCEANEER CLUB 3-12 YEARS OLD				Pluto's Pajama Party			Cartoon Time		Magic Show				Four Square		Glow Jam										



FRIDAY, AUGUST 12, 2016 - PALMA DE MALLOCA, SPAIN

# BUENA VISTA THEATRE

Deck 5, Aft



**Family Fun Movie**  
**8:30 am**  
 Duration: 1 hr 42 mins  
 Rating: PG  
**DOLBY 3D**  
 Open Captioning  
**10:30 am**  
 Duration: 1 hr 46 mins  
 Rating: PG  
**DOLBY 3D**  
**3:00 pm, 5:15 pm**  
 Duration: 1 hr 45 mins  
 Rating: PG  
**PETER'S DRAGON**  
**11:00 pm**  
 Duration: 1 hr 42 mins  
 Rating: PG  
**DOLBY 3D**

## Character Appearances

**DAISY DUCK**  
 DK4 Mid (S) - 5:15 pm  
**PLUTO**  
 DK4 Mid (S) - 5:45 pm  
**GOOFY**  
 DK4 Mid (S) - 7:45 pm  
**MICKEY MOUSE**  
 DK4 Mid (S) - 8:15 pm  
**'TIL WE MEET AGAIN**  
 Lobby Atrium - 10:15 pm



(P) - Portside, (S) - Starboard Side  
 Don't forget your Camera to capture those Magical Moments!  
 Check here each day for Character appearances.  
 For detailed Character appearance information see the Character Information Board in the Lobby Atrium.  
 Meet-and-Greets will be advertised for the length of time the line will be

## SHIP DIRECTORY

### YOUTH ACTIVITIES

DISNEY'S OCEANEER CLUB	DECK 5, Mid	8:00 AM - 12:00 AM
DISNEY'S OCEANEER LAB	DECK 5, Mid	11:00 AM - 12:00 AM
EDGE	DECK 9, Mid	11:00 AM - 12:00 AM
IT'S A SMALL WORLD NURSERY	DECK 5, Aft	8:00 AM - 11:00 PM
VIBE	DECK 10, Mid	12:00 PM - 1:00 AM

### POOLS

\*Children under 12 years of age must have adult supervision in all pools.

AQUADUNK	DECK 10, Mid	2:00 PM - 4:30 PM
		5:15 PM - 8:00 PM
AQUALAB	DECK 9, Aft	10:00 AM - 8:00 PM
GOOFY'S POOL	DECK 9, Mid	10:00 AM - 6:00 PM
		8:00 PM - 10:00 PM
NEPHEWS' SPLASH ZONE	DECK 9, Aft	10:00 AM - 6:00 PM
QUIET COVE POOL (18+)	DECK 9, Fwd	8:00 AM - 11:00 PM
TWIST 'N' SPOUT	DECK 9, Aft	2:00 PM - 9:00 PM

Please note, "selfie sticks" are not permitted in the pools or on the slides.  
 Complimentary pool vests are available for children to use in the pools onboard.  
 They are located on the pool deck.

### RECREATION

PORT ADVENTURES DESK	DECK 3, Mid	7:30 AM - 10:00 AM
		7:00 PM - 8:30 PM
SENSES FITNESS CENTER (18+)	DECK 9, Fwd	6:00 AM - 10:00 PM
WIDE WORLD OF SPORTS DECK	DECK 10, Fwd	24 HOURS

### GENERAL INFORMATION

BUENA VISTA THEATRE	DECK 5, Aft	SHOWTIMES
CONNECT@SEA DESK	DECK 3, Aft	8:00 AM - 10:00 AM
		4:00 PM - 6:00 PM
		7:00 PM - 10:00 PM
DISNEY VACATION CLUB DESK	DECK 4, Mid	5:00 PM - 10:00 PM
DISNEY VACATION PLANNING DESK	DECK 4, Mid	8:30 AM - 9:30 AM
		4:00 PM - 10:00 PM
FUNNEL VISION	DECK 9, Mid	SHOWTIMES
GUEST SERVICES	DECK 3, Mid	24 HOURS
HAIR BRAIDING	DECK 9, Mid	
MEDICAL HEALTH CENTER	DECK 1, Fwd	9:30 AM - 11:00 AM
		4:30 PM - 7:00 PM
PORT SHOPPING DESK	DECK 3, Mid	7:00 PM - 8:30 PM
PRELUDES	DECK 4, Fwd	5:30 PM - 9:00 PM
SENSES SPA AND SALON	DECK 9, Fwd	8:00 AM - 10:00 PM
SHUTTERS PHOTO GALLERY	DECK 4, Aft	5:30 PM - 11:00 PM
WALT DISNEY THEATRE	DECK 4, Fwd	SHOWTIMES

### SHOPPING

BIIBIDI BOBBIDI BOUTIQUE	DECK 10, Fwd	12:00 PM - 10:00 PM
MICKY'S MAINSAIL	DECK 4, Fwd	6:00 PM - 12:00 AM
QUACKS	DECK 9, Mid	
SEA TREASURES	DECK 3, Fwd	6:00 PM - 12:00 AM
VISTA GALLERY	DECK 4, Mid	6:00 PM - 11:00 PM
WHITE CAPS	DECK 4, Fwd	6:00 PM - 12:00 AM

## DINNER

## WEATHER FORECAST

Today: Partly Sunny  
 High: 80°F/27°C  
 Tomorrow: Partly Sunny  
 High: 78°F/26°C

## Evening Attire: Cruise Casual

## DINING & LOUNGES

### BRUNCH

CABANAS	DECK 9, Aft	7:00 AM - 11:00 AM
DAISY'S DE LITES	DECK 9, Aft	6:30 AM - 8:30 AM
LUMIERE'S (A-LA CARTE)	DECK 3, Mid	8:00 AM - 9:30 AM

### LUNCH

CABANAS	DECK 9, Aft	11:45 AM - 2:00 PM
DAISY'S DE LITES	DECK 9, Aft	11:00 AM - 6:00 PM
LUMIERE'S (A-LA CARTE)	DECK 3, Mid	12:00 PM - 1:30 PM
PETE'S BOILER BITES	DECK 9, Aft	11:00 AM - 6:00 PM
PINOCCHIO'S PIZZERIA	DECK 9, Mid	11:00 AM - 6:00 PM

### DINNER

ANIMATOR'S PALATE	DECK 4, Aft	6:00 PM & 8:30 PM
CARIOCA'S	DECK 3, Aft	6:00 PM & 8:30 PM
LUMIERE'S	DECK 3, Mid	6:00 PM & 8:30 PM
PALO (18+)	DECK 10, Aft	6:30 PM - 8:30 PM
PETE'S BOILER BITES	DECK 9, Aft	6:00 PM - 10:00 PM

### LATE NIGHT SNACKS

O'GILLS PUB	DECK 3, Fwd	10:45 PM - 11:45 PM
PINOCCHIO'S PIZZERIA	DECK 9, Mid	9:30 PM - 12:00 AM
PROMENADE LOUNGE	DECK 3, Aft	10:45 PM - 11:45 PM

### ADDED FEATURES

EYE SCREAM	DECK 9, Aft	11:00 AM - 11:00 PM
BEVERAGE STATION	DECK 9, Aft	24 HOURS
ROOM SERVICE	DIAL 7-4330	CLOSES AT 1:00 AM

### ENTERTAINMENT - LOUNGES - BARS

Adults must be 21 and older to consume alcoholic beverages.

AFTER HOURS	DECK 3, Fwd	(AFTER 9:00 PM ADULTS ONLY)
COVE CAFE (18+)	DECK 9, Mid	6:30 AM - 12:00 AM
D LOUNGE	DECK 4, Mid	SHOWTIMES
FATHOMS (18+)	DECK 3, Fwd	7:00 PM - 2:00 AM
FROZONE TREATS	DECK 9, Aft	12:00 PM - 6:00 PM
KEYS (18+)	DECK 3, Fwd	6:00 PM - 12:30 AM
O'GILLS PUB (18+)	DECK 3, Fwd	4:00 PM - 12:30 AM
PRELUDES	DECK 4, Fwd	5:30 PM - 9:00 PM
PROMENADE LOUNGE	DECK 3, Aft	8:00 AM - 12:00 AM
PINOCCHIO'S PIZZERIA	DECK 9, Mid	9:30 AM - 12:00 AM
SIGNALS (18+)	DECK 9, Fwd	11:00 AM - 10:00 PM

Public Health Advisory: Consuming raw or undercooked meats, poultry, seafood, shellfish, or eggs may increase your risk for foodborne illness, especially if you have certain medical condition.

All Ashore: Approx. 8:00 am  
 All Aboard: 4:45 pm

Ship's Agent In Palma de Mallorca  
 Ilena Kubelkova - Port Agency Services Supervisor

ENTERTAINMENT & PORT SERVICES