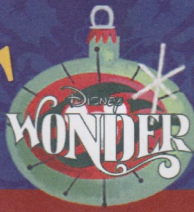


# PERSONAL NAVIGATOR



Sunrise: 6:09 am Sunset: 5:20 pm  
Evening Attire: Cruise Casual

Today: Cloudy High: 80°F/27°C  
Tomorrow: Sunny High: 78°F/26°C

THURSDAY, NOVEMBER 12, 2015

DAY AT SEA

## Disney DREAMS

AN ENCHANTED CLASSIC

*In this spectacular fantasy, a little girl discovers the power of her dreams. Fly through the air with Peter Pan and your imagination, as many Classic Disney Characters spring to life. With a little Faith, Trust and Pixie Dust you'll see that your dreams can come true!*

WALT DISNEY THEATRE

Deck 4, Forward  
6:15 pm & 8:30 pm



As a courtesy to all Guests, we kindly advise that the saving of seats is **not** permitted in the Walt Disney Theatre.

Assistance available at the entrance to the Walt Disney Theatre 30 minutes prior to show time.

## Disney WONDER Fun Facts

**Tonnage:** 83,308 gross, 53,899 net

**Length Overall:** 294m / 964ft

(height of Eiffel Tower is 986ft)

**Maximum Speed:** 26 knots (30 miles per hour)

### Important Dates

**Keel Laid:** May 15, 1997

**Launch Date:** July 14, 1999

**Inaugural Cruise:** August 15, 1999

\* The anchor of the Disney Wonder weighs 34,250 lbs (15,569 kg) - the same weight as three elephants.

\* Over 50 nationalities make up the 1000 Crew members onboard.

\* Steamboat Willie stands proudly 10 ft tall on the bow of the ship. There are other characters in the artwork around him.

\* Donald and his nephew Huey hang painting the finishing touches on the stern.

## 'TIL WE MEET AGAIN

### A MERRY FAREWELL

A final chance to come together with your Disney friends and Merrytime cruisers. The children are all invited to the stairs to perform their own candlelight magic. Hugs, photos and joy will prevail!

Lobby Atrium,  
Deck 3, Midship,  
10:00 pm

## Don't Miss:

### Captain's Signing

Treasure Ketch, Deck 4, Forward - 12:15 pm

Meet the Master of the Disney Wonder and have your cruise memories signed.

### Jack-Jack's Incredible Diaper Dash

Lobby Atrium, Deck 3, Midship - 12:45 pm

Calling all baby cruisers! It's time to take to the mat to see who's the fastest crawler of the seven seas! Register your baby 15 minutes prior to the big race.

### Deck the Deck Tropical Holiday Party

Deck 9 Stage, Deck 9, Midship - 3:00 pm

How do you celebrate the Holidays when you're on a tropical cruise? Your Disney pals know how to get a holiday party started with the magic of the tropics as our background! Mele Kaliki Maka everyone!

### Variety Show: John Charles (18+)

WaveBands, Deck 3, Forward - 10:30 pm

Featuring the Music & Comedy of John Charles, in this Adult exclusive cabaret style show.



### Book your next Disney Vacation Today!

If you're thinking about booking a future Disney cruise or Adventures by Disney trip, find out how to save with special offers only available onboard! Don't miss this opportunity to plan your next Disney vacation. Visit the Onboard Sales Desk on Deck 4, Midship, for more information.

## DINNER MENU

Animator's Palate : 'Til We Meet Again  
Parrot Cay : 'Til We Meet Again  
Triton's : 'Til We Meet Again

## DRINK OF THE DAY

High Tide (Alcoholic)  
Lava Smoothie (Non-Alcoholic)

## IMPORTANT NUMBERS

Fire/Security: 7-3001  
Medical Emergency: 7-3000  
Health Center: 7-1923

# ADULT ACTIVITY HIGHLIGHTS

## VISTA SPA FITNESS CLASSES & SEMINARS

*Sunrise Stretch* - Vista Spa Fitness Center - 7:00 am  
*Fab Abs* - Vista Spa Fitness Center - 7:30 am  
*Tour De Cycle* (Sign-Up Required) - Vista Spa Fitness Center - 8:00 am  
*Body Sculpt Boot Camp* (Nom. Fee) - Vista Spa Fitness Center - 9:00 am  
*Seminar: Improving Your Posture-Walk in Comfort* - Vista Spa Fitness Center - 11:00 am  
*Secrets to a Flatter Stomach* - WaveBands - 2:00 pm  
*Complimentary Footprint Analysis* - Vista Spa Fitness Center - 4:00 pm



## TASTING CLASSES

*Champagne Tasting* (21+) - Cadillac Lounge - 12:15 pm  
*Beer Tasting* (21+) - Cadillac Lounge - 4:00 pm  
*Cognac Tasting* (21+) - Outlook Cafe - 10:30 pm  
 Please make reservations for tastings at Guest Services for a nominal fee.  
 Tasting Seminars are only for Guests 21 and older.

## 1820 SOCIETY: LUNCH

*Triton's, Deck 3, Midship - 12:00 pm*  
 Get to know your fellow Society members over lunch.

## 1820 SOCIETY: GAME CHALLENGE

*Outlook Cafe, Deck 10, Midship - 5:15 pm*  
 Join us and play some of your favorite board games.

## 1820 SOCIETY: FAREWELL

*Diversions, Deck 3, Forward - 10:15 pm*  
 Join your Cruise Staff and your new friends in this last gathering for some fun.

(For Guests aged 18 to 20 years old.)



## ART OF THE THEME SHOW TOUR

*Palo, Deck 10, Aft - 10:30 am & 2:00 pm*  
 Join us for a guided tour highlighting the design, Imagineering and artistry of the Disney Wonder. This tour is reserved for Guests 18 and over.

## LIVE MUSIC WITH SUPERNOVA DUO

*Quiet Cove Pool, Deck 9, Midship - 12:00 pm & 1:00 pm*  
*WaveBands, Deck 3, Forward - 9:45 pm*  
 Join Supernova Duo as they play live for your listening pleasure.

## MATTHEW FALLON: HYPNOSIS SEMINAR

*WaveBands, Deck 3, Forward - 12:45 pm*  
 Hypnosis revealed! Join Master Hypnotist Matthew Fallon, for this fun and informative seminar!

## TV TUNES TRIVIA

*Diversions, Deck 3, Forward - 1:15 pm*  
 Remember the songs to those classic TV shows? Come and find out just how well you do in this fun trivia.



# FUN FOR ALL AGES HIGHLIGHTS

## WAKE UP WITH DISNEY JUNIOR

*Promenade Lounge, Deck 3, Aft - 9:00 am*  
 What happens when you experience unlimited fun with your favorite Disney Junior shows? You get an exciting dance party designed especially for preschoolers ages seven and under.



## \$10,000 MEGA JACKPOT BINGO

*Bingo Pre-Sales start at 10:45 am*  
*WaveBands, Deck 3, Forward - 11:00 am*  
 It's Big, it's Massive, it's Supersized! It's \$10,000 MEGA Jackpot Bingo! Take home \$10,000 if you can cover your card in 46 numbers or less. If not, we carry on to play for the biggest cash prize of the session, plus today's Disney Vacation Club sponsored raffle includes a \$100 Onboard Credit and prize-packs. Pre-Sales start 15 minutes prior to game.



## NAPKIN FOLDING

*Studio Sea, Deck 4, Midship - 11:15 am*  
 Learn how to fold a napkin to impress your guests at your next dinner party.

## STORYTIME WITH MRS. CLAU

*Lobby Atrium, Deck 3, Midship - 11:15 am*  
 Full of fun and whimsy, Mrs. Claus makes a very special visit to the ship's atrium to read classic holiday tales to all the children - and children at heart!

## DISNEY VACATION CLUB GROUP PREVIEW

*Studio Sea, Deck 4, Midship - 12:15 pm & 4:15 pm*  
 Want to learn more about taking magical vacations year after year? Please see a Disney Vacation Club representative on Deck 4, Midship, or call 7-2805 from your stateroom phone for more information about our interactive group presentation.



## JACK-JACK'S INCREDIBLE DIAPER DASH

*Lobby Atrium, Deck 3, Midship - 12:45 pm*  
 Calling all baby cruisers! It's time to take to the mat to see who's the fastest crawler of the seven seas! Register your baby 15 minutes prior to the big race.

## TOWEL FOLDING

*Studio Sea, Deck 4, Midship - 2:15 pm*  
 Learn to create those amazing towel creatures you've seen in your stateroom all cruise long.

## DECK THE DECK TROPICAL HOLIDAY PARTY

*Deck 9 Stage, Deck 9, Midship - 3:00 pm*  
 How do you celebrate the Holidays when you're on a tropical cruise? Your Disney pals know how to get a holiday party started with the magic of the tropics as our background! Mele Kaliki Maka everyone!



## FINAL JACKPOT BINGO

*Bingo Pre-Sales start at 3:30 pm*  
*WaveBands, Deck 3, Forward - 4:00 pm*  
 The snowball jackpot MUST BE WON at this final session! Beat the line and get your cards early. Who will be the lucky winner? It could be you! Pre-Sales start 30 minutes prior to game.



## FAMILY TALENT SHOW

*WaveBands, Deck 3, Forward - 7:30 pm*  
 Your fellow Guests have rehearsed and are ready to show off their talents.

## FAMILY SUPERSTAR KARAOKE

*Studio Sea, Deck 4, Midship - 10:30 pm*  
 Join your Cruise Staff and sing along to your favorite song - fun for everyone.



# YOUTH ACTIVITIES HIGHLIGHTS

## DINE & PLAY

A convenience for families dining at 8:15 pm, our Youth Activities counselors will be available at 9:15 pm at the entrance of Triton's, Parrot Cay and Animator's Palate dining rooms to bring registered children to join the fun in Disney's Oceaneer Club and Disney's Oceaneer Lab.



**Deck 5, Aft (7-18500) 9:00 am - 11:00 pm**

Infants and Toddlers can enjoy toys and activities at Flounder's Reef Nursery. Reservations are first come, first served so please stop by!



**Deck 5, Midship (7-1440) 9:00 am - 12:00 am**  
(3 - 12 years old)

### CHIP AND DALE'S RESCUE RANGERS

**1:30 pm**  
Chip and Dale are recruiting new Rescue Rangers and your children will enroll into Ranger School in order to become official Rescue Rangers.

### FRIENDSHIP ROCKS PREP

**4:15 pm**  
Come and prep for the show



**Deck 5, Midship (7-1445) 9:00 am - 12:00 am**  
(3 - 12 years old)

### DETECTIVE SCHOOL

**1:30 pm**  
It's a crime how much fun you'll have as you go CSI Goofy style.

### FRIENDSHIP ROCKS

**5:00 pm**  
Come and celebrate with all the children from the Oceaneer Club and Lab in the jammin' performance of Friendship Rocks! You won't want to miss any of the fun.



**Deck 2, Midship (7-5810) 9:00 am - 12:00 am**  
(11 - 14 years old)

### GINGERBREAD MAN DECORATING

**3:00 pm**  
Decorating your own Gingerbread man.

### FINAL FAREWELL SLIDESHOW

**10:45 pm**  
Take this opportunity to relive some memories from your Disney Cruise.



**Deck 11, Midship (7-1456) 10:00 am - 1:00 am**  
(14 - 17 years old)

### SLIDESHOW AND INFO SWAP

**10:45 pm**  
Head down memory lane and reminisce all the fun times from the Cruise!

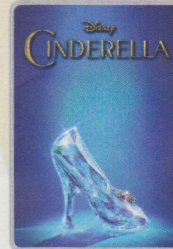
### MIX AND MATCH

**11:30 pm**  
Try to find your "perfect match" in Disney's very own "Dating" game.

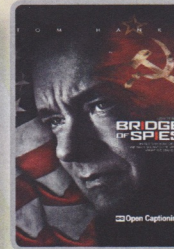
# BUENA VISTA THEATRE

Deck 5, Aft  
**Today's Movies**

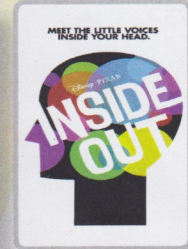
OC Open Captioning



8:30 am  
Duration:  
1 hr 52 mins  
Rating: PG



11:00 am  
Duration:  
2 hrs 15 mins  
Rating: PG-13



2:00 pm  
Duration:  
1 hr 42 mins  
Rating: PG



5:00 pm & 8:00 pm  
Duration: 2 hrs 10 mins  
Rating: PG



10:30 pm  
Duration: 2 hrs 15 mins  
Rating: PG-13



## FAMILY GAME SHOW

Join us for the ultimate test of your Disney knowledge as we play our live, interactive game show, that's "insania!"

**Studio Sea,  
Deck 4, Midship,  
7:30 pm**



## ADULT VARIETY ACT

Featuring the Comedy & Music of John Charles, as he entertains you in this adult exclusive show.

**Wavebands (18+),  
Deck 3, Forward,  
10:30 pm**

## YOUTH ACTIVITIES OPEN HOUSE

Open House is an opportunity for all to come and participate in a variety of exciting activities and free time in the Oceaneer Club, Oceaneer Lab, Flounder's Reef Nursery, Vibe and Edge throughout the cruise. During these times secured programming will still be offered in the other venue for those looking to check their children into care.

**Disney's Oceaneer Club: 6:00 pm - 7:00 pm**

**Edge: 9:00 am - 12:00 pm & 6:00 pm - 8:00 pm**  
**Vibe: 10:00 am - 12:00 pm & 4:00 pm - 6:00 pm**

# MORE TO ENJOY WHILE ONBOARD



## DISNEY VACATION CLUB® GROUP PREVIEW

Want to learn more about taking magical vacations year after year? Please see a Disney Vacation Club representative on Deck 4, Midship, or call 7-2805 from your stateroom phone for more information about our interactive group presentation.

## BOOK YOUR NEXT DISNEY VACATION TODAY!

If you're thinking about booking a future Disney cruise or Adventures by Disney trip, today is your last chance to save with special offers only available onboard! The last day of the cruise tends to get busy in the evening, so don't miss the opportunity to plan your next Disney vacation. Visit the sales desk, Deck 4, Midship, for more information.

## DEBARK TALK BROADCAST

Important information regarding the disembarkation procedures and your journey home will be covered in this debarkation briefing. The broadcast will be shown continuously on channel 22-2 of your stateroom television for your convenience.

## Connect@Sea

We are now offering a NEW and improved Internet service to stay connected on your cruise like no other in the industry! Internet packages range from \$0.25 per MB - \$89.00 (1000 MB package). For more information contact your Connect@Sea Expert or Guest Services onboard.

## EXPRESS WALK OFF

This option allows you to take your luggage off the ship at your leisure once the ship has been cleared by the local authorities. You won't need to wait for your luggage to enter the terminal and there is no need to claim it inside the terminal building. Please note that no assistance with luggage is provided for this option.

## EXPRESS CHECK OUT

If you have a credit card on file, you qualify for express check out. No need to visit Guest Services to settle your account.



Deck 9, Forward - Phone: 7-1465

## LAST DAY SPECIAL

All ladies and gents are invited to spend a relaxing evening in the spa.

Get spoiled with 50 minutes hands on treatment that includes, 25 mins back massage and 25 mins hydrating booster spa facial,

Today Only: for only \$109

## DISNEY INSPIRED DIAMOND COLLECTION

by SOPHIA FIORI  
DIAMONDS

AVAILABLE AT TREASURE KETCH  
DECK 4, FORWARD



## Shutters

## FINAL DAY TO PURCHASE YOUR CRUISE MEMORIES

This is your last chance to purchase your digital photos, photo prints and Photo books. Shutters on Deck 4, Aft, will be open until 11:00 pm tonight, so don't miss out on bringing home all those cruise memories!

*\*Photos captured on your vacation are only available for purchase during this cruise.*

## SHOPPING

### CAPTAIN'S SIGNING

Don't miss your chance to meet the Master of the Disney Wonder! Stop by Treasure Ketch today at 12:15 pm where you can have your cruise mementos signed by our Captain. Deck 4, Forward.

### OFFICER PIN TRADING

Come and trade pins with the Officers of the Disney Wonder Cruise Ship at 7:15 pm in Preludes, Deck 4, Forward.

### SOPHIA FIORI GUESS THE CARAT WEIGHT

Whoever guesses closest wins a Sophia Fiori fine jewelry piece! 9:30 am - 9:30 pm. Winners Announced tonight at 9:45 pm. Must be present to win. Treasure Ketch, Deck 4, Forward.

### 'TIL WE MEET AGAIN!

Although our time together is coming to a close, your memories will always live on! Visit Mickey's Mates for all your last minute Disney Cruise Line items.

### SOPHIA FIORI LAST OPPORTUNITY BLOW OUT SALE!

This is your last chance to get your hands on our fantastic collection of Sophia Fiori Couture diamond jewelry. Drop in to the Treasure Ketch and save up to 50% off your purchase and free sizing on any Sophia Fiori ring! These exquisite diamonds are not available back home so take advantage of these stunning deals and do not miss out!

Due to port regulations, when the ship is docked, the stores will remain closed.

## IMPORTANT INFORMATION

### Security Notice

All Guests (including Children) who wish to disembark or embark the ship are required to present their Key to the World card at the gangway. A photo ID is also required for those Guests who are 18 years of age or older. Guests under the age of 18 are required to have a parent, guardian or other responsible adult sign an authorization form at the Guest Service Desk if they wish to go ashore unaccompanied or with any adult from another stateroom.

### Sunscreen/Insect Repellent Advisory

Use sunscreen first and protect against mosquito bites and related illnesses by applying insect repellent on top of sunscreen when going ashore. Insect repellent is available for purchase in Treasure Ketch.

### Cold and Flu Reminder

Please wash hands frequently and thoroughly, particularly before meals. Contact the Health Center by dialing 7-1923, should anyone in your party become ill.

### Inclement Weather

For the safety of all Guests, outdoor events may be changed due to unforeseen weather conditions.

### Corridor Quiet Hours

As a courtesy to all our Guests, please recognize quiet hallway hours from 10:00 pm til 8:00 am.

### Environmental Message

With Disney's commitment to the Environment please refrain from throwing anything over the Ship's side. Thank you.

### No Reserved Seats Policy

As a courtesy to all Guests we kindly advise that the saving of seats is not permitted in the Walt Disney Theatre, and the saving of the sun loungers is not permitted on Deck 9 and 10. Items left unattended will be returned to lost and found at Guest Services, Deck 3, Midship.

### Smoking

For the comfort of our guests, the following areas are designated as smoking areas:

- Deck 10, forward, Starboard side
- Deck 9, forward, Starboard side at Quiet Cove
- Deck 4, aft, starboard side from 6:00 pm to 6:00 am only (all of Deck 4 is non-smoking from 6:00 am to 6:00 pm.)

Smoking is prohibited inside all guest staterooms and on stateroom verandahs. Guests found smoking in their staterooms or on their verandahs will be charged a \$250 stateroom recovery fee.

Electronic cigarettes may only be used in designated smoking areas.

### Walt Disney Theatre

Theatrical performances may use artificial fog, strobe lights, pyrotechnics and other special effects. For the safety of our performers and the comfort of those around you, the use of any photography or video recording device or any electronic equipment is prohibited.

### Verandah Safety

Please do not leave any combustible materials on your balcony when not present in your stateroom for safety reasons.

Morning	8:30	8:45	9:00	9:15	9:30	9:45	10:00	10:15	10:30	10:45	11:00	11:15	11:30	11:45	12:00	12:15	12:30	12:45	1:00	1:15	1:30
FUNNEL VISION			Virtual Tours Funnel Vision		Brother Bear (G) Funnel Vision						Peter Pan (G) Funnel Vision								Pinocchio (G) Funnel Vision		
BUENA VISTA THEATRE	Cinderella (2015) (PG) Duration: 1 Hour 52 Minutes										Bridge of Spies (PG-13)  Open Captioning Duration: 2 Hours 15 Minutes										
CHARACTERS			Pluto Gazebo									Storytime with Mrs. Claus Lobby Atrium									
FUN FOR ALL AGES			Promenade Lounge			Game Show: The Wheel Promenade Lounge			Bingo Pre Sales		\$10,000 Mega Jackpot WaveBands		Animation Goofy Animator's Palate		Cruisin' for Trivia Promenade Lounge		Captain's Signing Treasure Ketch	Lobby Atrium			
	Toddler Time for Families  Captain's Closet, Disney's Oceaneer Club										Crafts: 3D Crafts Promenade Lounge		Napkin Folding Studio Sea		Disney Vacation Club Group Preview Studio Sea						
ADULTS	Friends of Bill W. Outlook Cafe		Walk A Mile DK4, Fwd Elevators		Disney Trivia Diversions		Art of The Theme Show Tour Palo				1820 Society: Lunch Triton's		Matthew Fallon: Hypnosis Seminar								
	Boot Camp (Nom. Fee) Vista Spa Fitness Center									Posture Analysis Vista Spa Fitness Center			Know It All Trivia Diversions		Animation Goofy Animator's Palate		TV Tunes Trivia Diversions				
VIBE 14-17 YEARS OLD	Youth Activities Open House										GOTCHA		Gingerbread Man Decorating		Create a Postcard						
EDGE 11-14 YEARS OLD	Youth Activities Open House										Holiday Animation Cells				Game Challenge						
OCEANEER LAB 3-12 YEARS OLD	Disney Cruise Line Trivia			Eggsperiments			Picture This			Four Square		Lunch				Detective School					
OCEANEER CLUB 3-12 YEARS OLD	Where's Tink?			Mouseketeer Training			Game Challenge		Toy Story Boot Camp		Create a Postcard		Rescue Rangers								

Afternoon	1:45	2:00	2:15	2:30	2:45	3:00	3:15	3:30	3:45	4:00	4:15	4:30	4:45	5:00	5:15	5:30	5:45	6:00	6:15	6:30	6:45
FUNNEL VISION						Deck the Deck Funnel Vision		Mickey's Once Upon A Christmas Funnel Vision				Virtual Tours Funnel Vision		Monsters, Inc. (G) Funnel Vision							
BUENA VISTA THEATRE	Inside Out (PG) Duration: 1 Hour 42 Minutes										Tomorrowland (PG) Duration: 2 Hours 10 Minutes										
CHARACTERS						Deck 9 Stage								Mickey Lobby Atrium (P)		Pluto DK4 Mid (S)					
FUN FOR ALL AGES	Crafts: Origami Creations Promenade Lounge		Disney Tunes Trivia Promenade Lounge		Tropical Holiday Party Deck 9 Stage		Bingo Pre-Sales		Final Jackpot WaveBands		Talent Show Rehearsals WaveBands		Tom Scott LIVE Lobby Atrium		AN ENCHANTED CLASSIC Walt Disney Theatre						
	Towel Folding Studio Sea		Toddler Time for Families  Captain's Closet, Disney's Oceaneer Club				Crafts: Animal Masks Promenade Lounge		Live Music with Dreem Duo Promenade Lounge												
ADULTS	Movie Quotes Trivia Diversions		Art of The Theme Show Tour Palo				Theme Parks Diversions		Disney Vacation Club Group Preview Studio Sea		Pub Quiz Diversions		1820 Society: Game Challenge Outlook Cafe								
VIBE 14-17 YEARS OLD	Marshmallow Olympics		Disney Cruise Line Trivia		Flubber		Youth Activities Open House				Game Challenge										
EDGE 11-14 YEARS OLD	Game Challenge		Sports Deck Fun		Create a Postcard		Gingerbread Man Decorating		Smoothie Hour		Holiday Crafts		Youth Activities Open House								
OCEANEER LAB 3-12 YEARS OLD	Detective School				Color Yourself Heroic				Friendship Rocks Prep		Friendship Rocks		Dinner								
OCEANEER CLUB 3-12 YEARS OLD	Chip and Dale's Rescue Rangers		Parachute Games		Nemo's Coral Reef Adventure				Friendship Rocks Prep		Friendship Rocks		Memory Wall		Youth Activities Open House		Dinner in Disney's Oceaneer Lab				

Evening	7:00	7:15	7:30	7:45	8:00	8:15	8:30	8:45	9:00	9:15	9:30	9:45	10:00	10:15	10:30	10:45	11:00	11:15	11:30	11:45	12:00	
FUNNEL VISION			Virtual Tours Funnel Vision		Tangled (PG) Funnel Vision									Ratatouille (G) Funnel Vision								
BUENA VISTA THEATRE	Tomorrowland (PG) Duration: 2 Hours 10 Minutes										Bridge of Spies (PG-13) Duration: 2 Hours 15 Minutes											
CHARACTERS			Pluto Lobby Atrium (P)		Mickey DK4 Mid (S)								Lobby Atrium									
FUN FOR ALL AGES	Officer Pin Trading Preludes		Studio Sea		AN ENCHANTED CLASSIC Walt Disney Theatre				Live Piano with Tom Scott Lobby Atrium		Studio Sea											
	Family Talent Show WaveBands						Live Music with Dreem Duo Promenade Lounge		Live Music with Dreem Duo Promenade Lounge													
ADULTS	NFL Football: Buffalo Bills vs. New York Jets Diversions (Subject to Satellite Availability)										Live Music with Supremova Duo WaveBands		The Comedy and Music of JOHN CHARLES WaveBands		Cruise Staff DJ WaveBands							
	Live Piano with Chuck Perry Cadillac Lounge						Live Piano with Chuck Perry Cadillac Lounge						Chuck Perry LIVE Cadillac Lounge									
VIBE 14-17 YEARS OLD	That's Hilarious		Smoothie Hour		Gender Wars		Craft Corner				Slideshow and Info Swap		Mix and Match									
EDGE 11-14 YEARS OLD	Youth Activities Open House		Sports Deck Fun		Gender Wars		How Well Do You Know Your Counselor?		Final Farewell Slideshow		Final Farewell											
OCEANEER LAB 3-12 YEARS OLD	How Well Do You Know Your Counselor?		Mickey Mania		Wacky Relays		Flubber															
OCEANEER CLUB 3-12 YEARS OLD	Glow Jam				Pluto's Pajama Party		Final Farewell															

Symbol for activities that will be repeated during the cruise

FOLD

Fold along the dotted lines and take me with you so you don't miss any of the fun!

FOLD

IN THE SPOTLIGHT SERIES

CREATE & INVENT SERIES

OPEN HOUSE

JUMP UP! SERIES

CLUBHOUSE SERIES

STORYBOOK SERIES

THURSDAY, NOVEMBER 12, 2015 - DAY AT SEA

# BUENA VISTA THEATRE

Deck 5, Aft

Open Captioning



**8:30 am**  
Duration: 1 hr 52 mins  
Rating: PG



**11:00 am**  
Duration: 2 hrs 15 mins  
Rating: PG-13



**2:00 pm**  
Duration: 1 hr 42 mins  
Rating: PG



**5:00 pm & 8:00 pm**  
Duration: 2 hrs 15 mins  
Rating: PG



**10:30 pm**  
Duration: 2 hrs 15 mins  
Rating: PG-13

## Character Appearances

### PLUTO

Gazebo - 9:00 am  
DK4 Mid (S) - 5:45 pm  
Lobby Atrium (P) - 7:45 pm

### DECK THE DECK

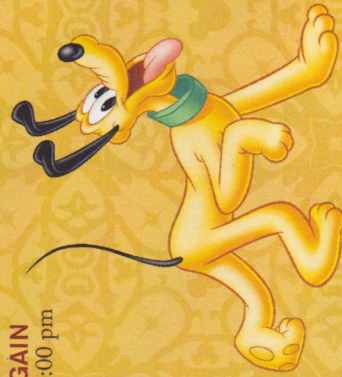
Deck 9 Stage - 3:00 pm

### MICKEY MOUSE

Lobby Atrium (P) - 5:45 pm  
DK4 Mid (S) - 7:45 pm

### TIL WE MEET AGAIN

Lobby Atrium - 10:00 pm



(P) - Port Side (S) - Starboard Side

Don't forget your Camera to capture those Magical Moments! Check here each day for all of today's Character Appearances or refer to the Character Board in the Lobby Atrium. Meet-and-Greets will be advertised for the length of time the line will be open. To avoid disappointment, please meet at start time of appearances.

## YOUTH ACTIVITIES THEMED EXPERIENCES

**CLUBHOUSE SERIES**  
focuses on movement and includes large group games & movement-oriented activities to younger children.

**STORYBOOK SERIES**  
is designed with a strong connection to the Disney classic stories.

**JUMP! UP! SERIES**  
focuses on children's stage movement-oriented activities and enthusiasm.

**SOLVE IT! SERIES**  
are less active, but will challenge children with problem/solutions-based activities.

### YOUTH ACTIVITIES OPEN HOUSE

Activities for families, adults and children of all ages to enjoy together.

## SHIP DIRECTORY

### YOUTH ACTIVITIES

DISNEY'S OCEANEER CLUB	DECK 5, MID	9:00 AM - 12:00 AM
DISNEY'S OCEANEER LAB	DECK 5, MID	9:00 AM - 12:00 AM
EDGE	DECK 2, MID	9:00 AM - 12:00 AM
VIBE	DECK 11, MID	10:00 AM - 1:00 AM
FLOUNDER'S REEF NURSERY	DECK 5, AFT	9:00 AM - 11:00 PM

### POOLS

Children under 12 years of age must have adult supervision in all pools.

GOOBY'S POOL	DECK 9, MID	9:00 AM - 6:00 PM
MICKEY'S POOL	DECK 9, AFT	8:00 PM - 10:00 PM
MICKEY'S SLIDE	DECK 9, AFT	8:30 AM - 10:00 PM
MICKEY'S SPLASH ZONE	DECK 9, AFT	9:00 AM - 5:30 PM
QUIET COVE POOL (18+)	DECK 9, FWD	8:30 AM - 10:00 PM

Complimentary pool vests are available for children to use in the pools onboard. They are located on the pool deck

### RECREATION

PORT ADVENTURES DESK	DECK 3, MID	6:00 AM - 10:00 PM
VISTA FITNESS CENTER (18+)	DECK 9, FWD	6:00 AM - 10:00 PM
WIDE WORLD OF SPORTS DECK	DECK 10, FWD	- 24 HOURS

### GENERAL INFORMATION

BUENA VISTA THEATRE	DECK 5, AFT	SHOWTIMES
DISNEY VACATION CLUB DESK	DECK 4, MID	9:00 AM - 11:30 PM
FUNNEL VISION	DECK 9, MID	5:00 PM - 10:00 PM
GUEST SERVICES	DECK 3, MID	SHOWTIMES
HAIR BRANDING	DECK 9, MID	24 HOURS
MEDICAL HEALTH CENTER	DECK 1, FWD	9:00 AM - 12:00 PM
ONBOARD SALES DESK	DECK 4, MID	2:00 PM - 6:00 PM
PORT & SHOPPING DESK	DECK 3, MID	9:30 AM - 11:00 AM
PRELUDES	DECK 4, FWD	4:30 PM - 7:00 PM
QUARTER MASTERS (ARCADE)	DECK 9, MID	3:30 PM - 6:00 PM
SHUTTERS PHOTO GALLERY	DECK 4, AFT	7:30 PM - 10:00 PM
VISTA SPA AND SALON	DECK 9, FWD	SHOWTIMES
WALT DISNEY THEATRE	DECK 4, FWD	SHOWTIMES

### SHOPPING

ART GALLERY	DECK 4, MID	1:00 PM - 4:00 PM
MICKEY'S MATES	DECK 4, FWD	7:00 PM - 9:00 PM
RADAR TRAP (DUTY FREE)	DECK 3, FWD	9:00 AM - 11:00 PM
TREASURE KETCH	DECK 4, FWD	6:00 PM - 11:00 PM
	DECK 4, FWD	9:00 AM - 11:00 PM

**IMPORTANT NUMBERS**

Fire/Security: 7-3001  
Medical EMERGENCY: 7-3000  
Health Center: 7-1923

## DINNER

Animator's Palate: "Til We Meet Again"  
Parrot Cay: "Til We Meet Again"  
Triton's: "Til We Meet Again"  
Dining Times: 5:45pm, & 8:15pm  
Evening Attire: Cruise Casual

## WEATHER FORECAST

Today: Cloudy High: 80°F/27°C  
Tomorrow: Sunny High: 78°F/26°C

## DINING & LOUNGES

### BREAKFAST

BEACH BLANKET BUFFET	DECK 9, AFT	7:30 AM - 10:30 AM
GOOBY'S GALLEY	DECK 9, AFT	7:00 AM - 9:00 AM
PARROT CAY	DECK 3, AFT	8:30 AM - 12:00 PM

### LUNCH

BEACH BLANKET BUFFET	DECK 9, AFT	12:00 PM - 2:00 PM
GOOBY'S GALLEY	DECK 9, AFT	10:30 AM - 6:00 PM
PALO BRUNCH (18+)	DECK 10, AFT	10:00 AM - 12:30 PM
PINOCCHIO'S PIZZERIA	DECK 9, MID	10:30 AM - 6:00 PM
PLUTO'S DOG HOUSE	DECK 9, AFT	10:30 AM - 6:00 PM
TRITON'S	DECK 3, MID	12:00 PM - 1:30 PM

### DINNER

ANIMATOR'S PALATE	DECK 4, AFT	5:45 PM & 8:15 PM
PARROT CAY	DECK 3, AFT	5:45 PM & 8:15 PM
TRITON'S	DECK 3, MID	5:45 PM & 8:15 PM
PALO (18+)	DECK 10, AFT	6:00 PM - 8:30 PM
PLUTO'S DOG HOUSE	DECK 9, AFT	6:00 PM - 9:30 PM

### LATE NIGHT SNACKS

DIVERSIONS	DECK 3, FWD	10:30 PM - 12:00 AM
PINOCCHIO'S PIZZERIA	DECK 9, MID	9:30 PM - 12:00 AM
PROMENADE LOUNGE	DECK 3, AFT	10:30 PM - 12:00 AM

### ADDED FEATURES

BEVERAGE STATION	DECK 9, AFT, PORT SIDE	24 HOURS
ICE CREAM AT GOOBY'S GALLEY	DECK 9, AFT	11:00 AM - 11:00 PM
ROOM SERVICE	DIAL 6801 OR 6802	CLOSES AT 1:00 AM

### ENTERTAINMENT - LOUNGES - BARS

Adults must be 21 and older to consume alcoholic beverages.

CADILLAC LOUNGE (18+)	DECK 3, FWD	6:00 PM - 12:00 AM
COVE CAFE (18+)	DECK 9, MID	6:30 AM - 12:00 AM
DIVERSIONS (18+ AFTER 9:00 PM)	DECK 3, FWD	12:00 PM - 12:00 AM
INTERNET CAFE	DECK 3, AFT	24 HOURS
OUTLOOK CAFE (18+)	DECK 10, MID	7:30 AM - 12:00 AM
PINOCCHIO'S PIZZERIA	DECK 9, MID	9:00 AM - 12:00 AM
PLUTO'S DOG HOUSE	DECK 9, AFT	10:30 AM - 6:00 PM
PRELUDES	DECK 4, FWD	5:30 PM - 9:30 PM
PROMENADE LOUNGE	DECK 3, AFT	7:30 AM - 12:00 PM
SIGNALS (18+)	DECK 9, FWD	9:30 AM - 10:30 PM
STUDIO SEA	DECK 4, MID	SHOWTIMES
WAVE BANDS (18+)	DECK 3, FWD	7:30 PM - 2:00 AM

Public Health Advisory: Consuming raw or under-cooked meats, poultry, seafood, shellfish, or eggs may increase your risk for food borne illness, especially if you have certain medical conditions.